



CALENVIROSCREEN 2.0 UPDATE

San Joaquin Valley Partnership
June 20, 2014



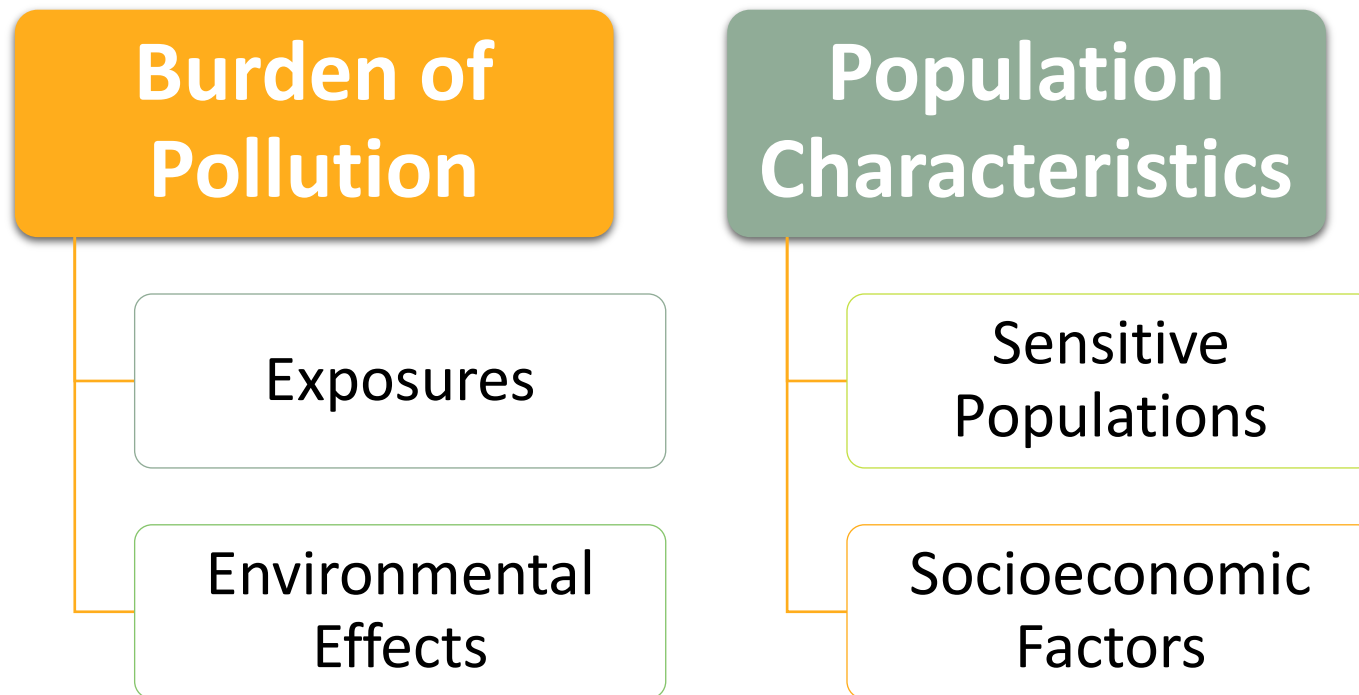
FOCUS OF CALENVIROSCREEN

“...exposures, public health or environmental effects from the combined emissions and discharges in a geographic area, including environmental pollution from all sources, whether single or multi-media, routinely, accidentally, or otherwise released. Impacts will take into account sensitive populations and socioeconomic factors, where applicable and to the extent data are available.”

-- Definition of “cumulative impacts” by CalEPA
Interagency Working Group
on Environmental Justice



CALENVIROSCREEN MODEL



CALENVIROSCREEN VERSION 2.0

DRAFT CALIFORNIA COMMUNITIES
ENVIRONMENTAL HEALTH SCREENING
TOOL, VERSION 2.0
(CALENVIROSCREEN 2.0)

GUIDANCE AND SCREENING TOOL



April 2014 Draft

Matthew Rodriguez, Secretary
California Environmental Protection Agency

George V. Alexeeff, Ph.D., Director
Office of Environmental Health Hazard Assessment



- Broad picture of the relative burdens California communities face from environmental pollution
- 19 indicators of environmental, health, and socioeconomic conditions
- Census tract scale
- Guidance on potential uses of tool

CALENVIROSCREEN 2.0 INDICATORS

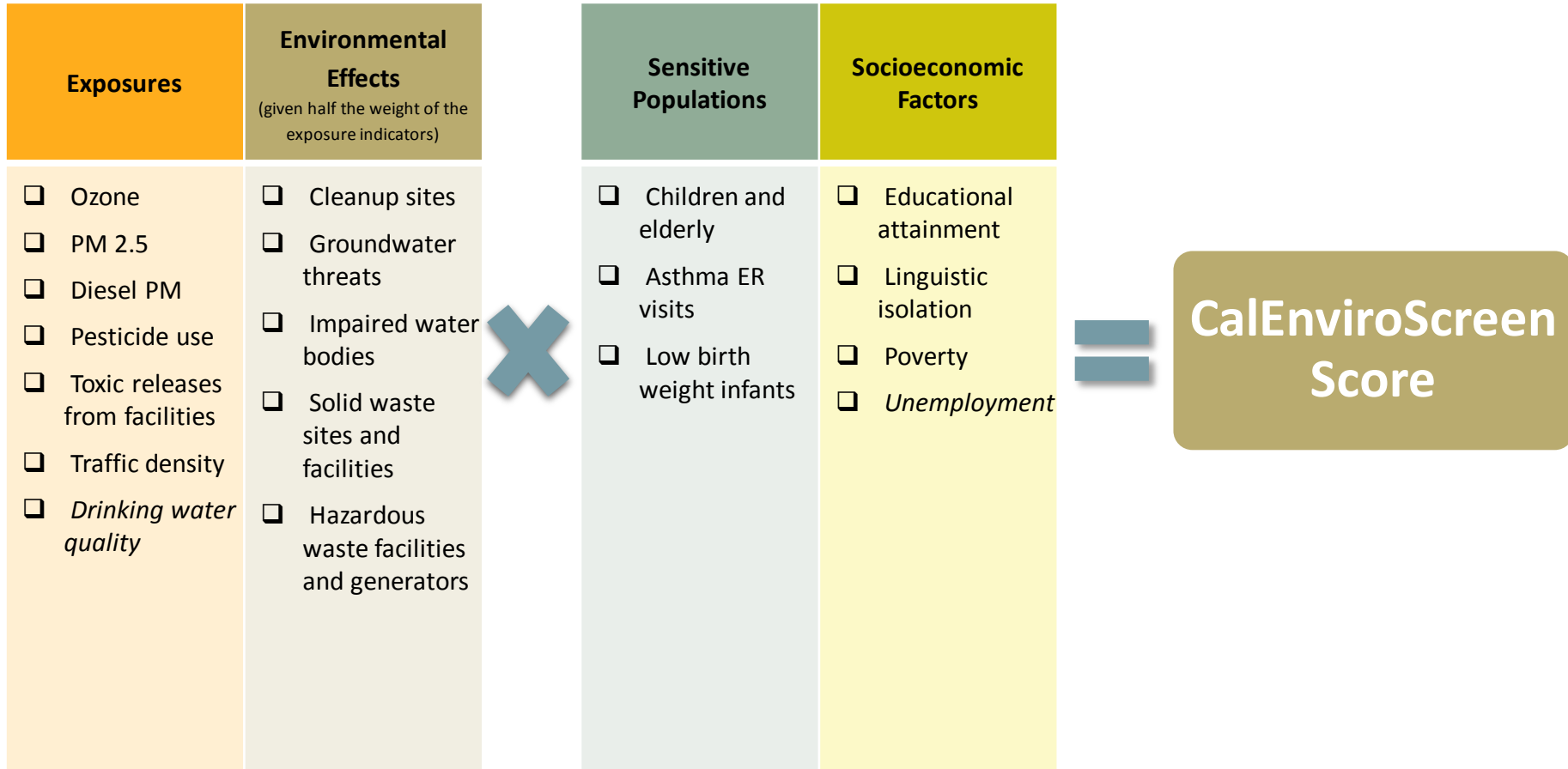
Exposures	Environmental Effects	Sensitive Populations	Socioeconomic Factors
<ul style="list-style-type: none"> <input type="checkbox"/> Ozone <input type="checkbox"/> PM 2.5 <input type="checkbox"/> Diesel PM <input type="checkbox"/> Pesticide use <input type="checkbox"/> Toxic releases from facilities <input type="checkbox"/> Traffic density <input type="checkbox"/> <i>Drinking water quality</i> 	<ul style="list-style-type: none"> <input type="checkbox"/> Cleanup sites <input type="checkbox"/> Groundwater threats <input type="checkbox"/> Impaired water bodies <input type="checkbox"/> Solid waste sites and facilities <input type="checkbox"/> Hazardous waste facilities and generators 	<ul style="list-style-type: none"> <input type="checkbox"/> Children and elderly <input type="checkbox"/> Asthma ER visits <input type="checkbox"/> Low birth weight infants 	<ul style="list-style-type: none"> <input type="checkbox"/> Educational attainment <input type="checkbox"/> Linguistic isolation <input type="checkbox"/> Poverty <input type="checkbox"/> <i>Unemployment</i>

SCORING METHOD

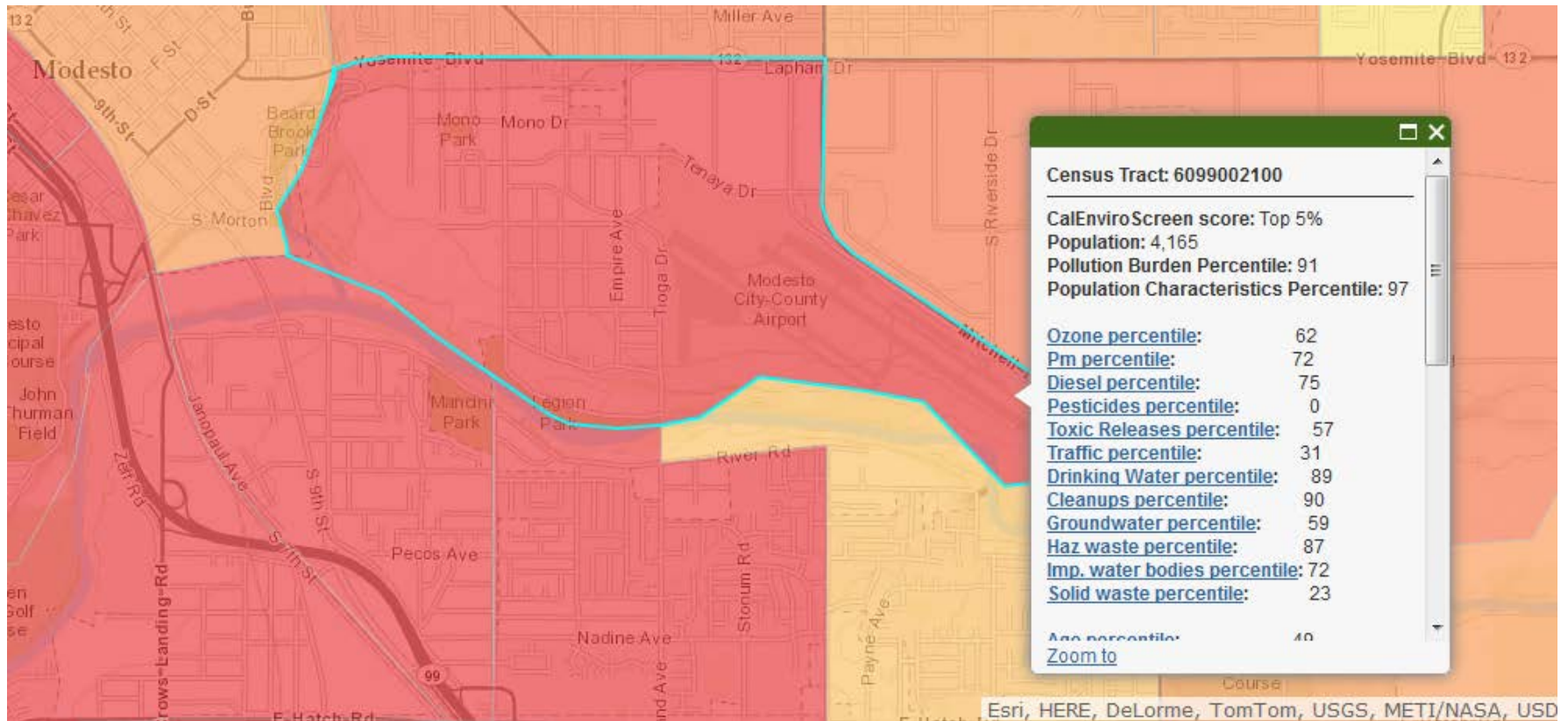
- Each census tract is scored for each indicator
 - For example, 75% percentile is higher than 75% of other census tracts in California.
- CalEnviroScreen score is calculated by combining all indicator scores
- Scores allow comparison of different areas

Pollution Burden

Population Characteristics

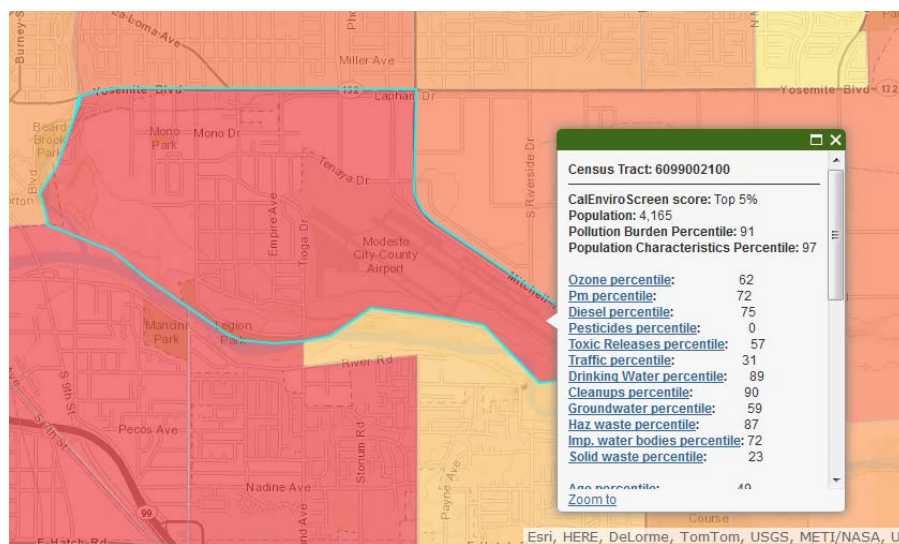


EXAMPLE CENSUS TRACT



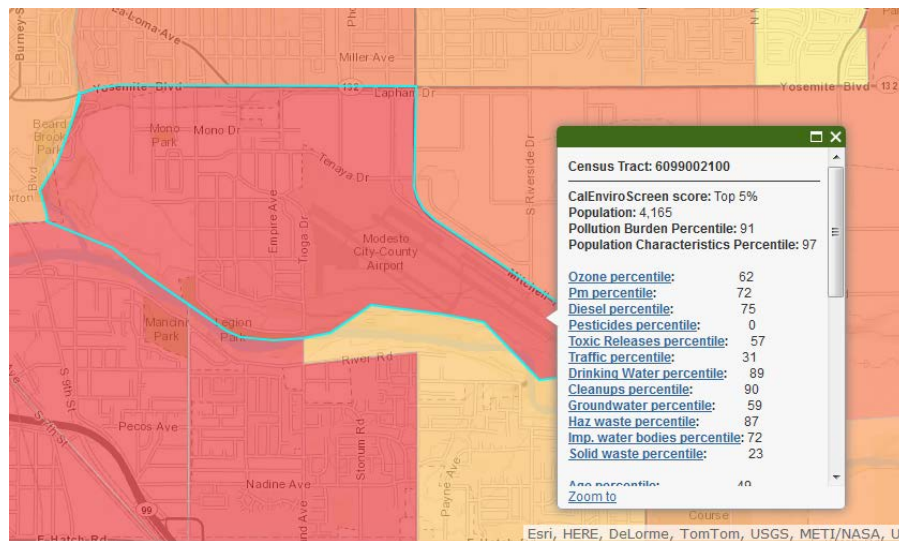
Exposure Indicators

Indicator	Ozone (concentrations)	PM 2.5 (concentrations)	Diesel PM (emissions)	Pesticide Use (lbs./sq. mi.)	Toxic Releases (RSEI toxicity- weighed releases)	Traffic (density)	Drinking Water (index)
Raw Value	0.08533	13.97318	25.83	0	516.1300	611.3606	80.10663
Percentile	62	72	75	0	57	31	89



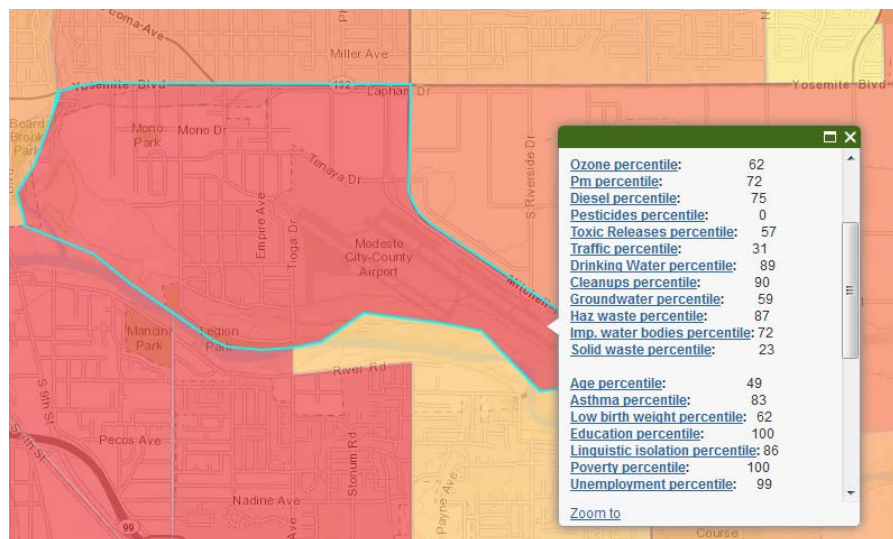
Environmental Effects Indicators

Indicator	Cleanup Sites (weighted sites)	Groundwater Threats (weighted sites)	Hazardous Waste Facilities/Gen erators (weighted sites)	Impaired Water Bodies (number of pollutants)	Solid Waste Sites/Facilities (weighted sites)
Raw Value	30	20.25	1.11	7	0.5
Percentile	90	59	87	72	23



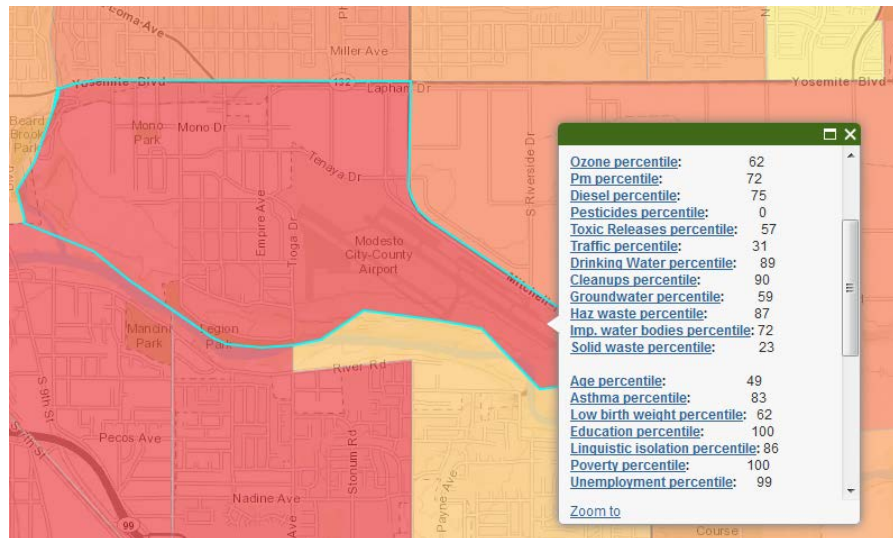
Sensitive Populations

Indicator	Children (<10) and Elderly (>65) (percent)	Asthma (rate per 10,000)	Low Birth Weight (percent)
Raw Value	24.7	63.02	0.05176
Percentile	49	83	62



Socioeconomic Indicators

Indicator	Educational Attainment (percent)	Linguistic Isolation (percent)	Poverty (percent)	Unemployment (percent)
Raw Value	70.5	23	87.48896	29.65
Percentile	100	86	100	99



DRAFT CAL ENVIRO SCREEN 2.0

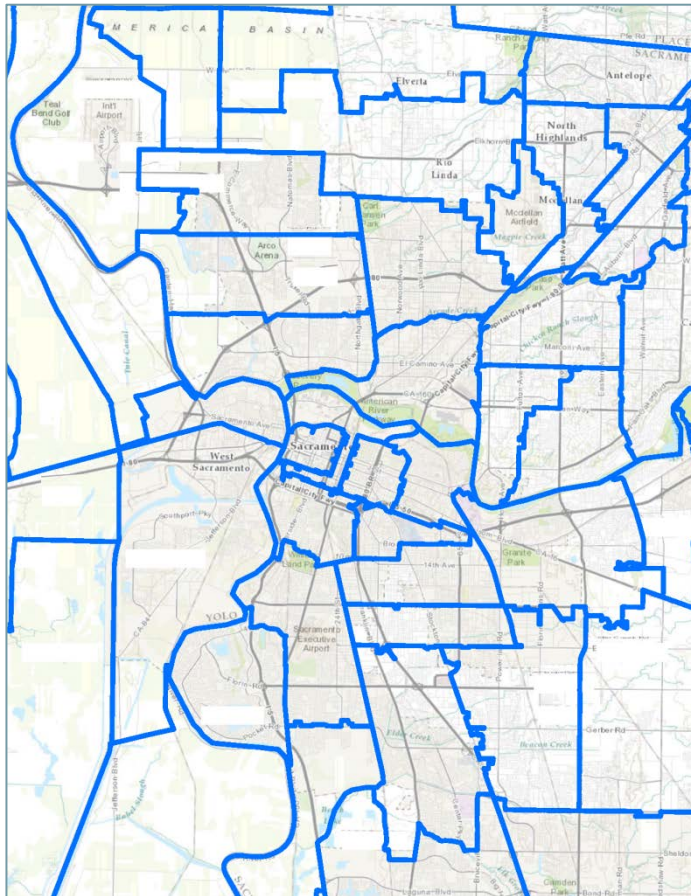
PROPOSED CHANGES

- ZIP code \Rightarrow census tracts
- Use newer data when available
- Improve toxic release data used
- Incorporate proximity to people for environmental hazards
- New socioeconomic indicator: *unemployment rate*
- New exposure indicator: *drinking water quality*
- Incorporation of additional data on tribal lands

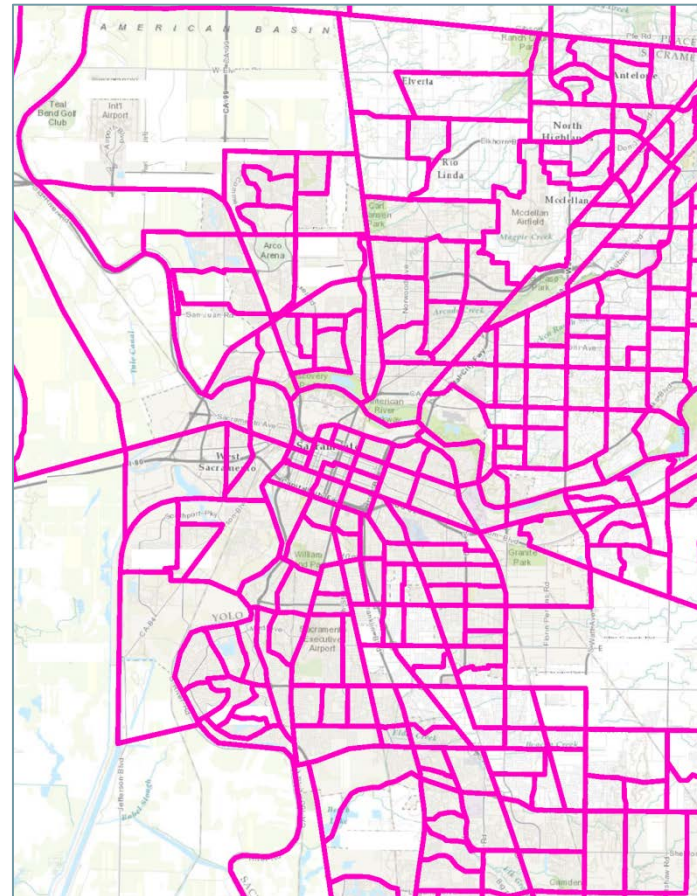


ZIP CODES ⇨ CENSUS TRACTS

ZIP CODE SCALE



CENSUS TRACT SCALE



EXPOSURE INDICATORS

Indicator	Proposed Changes
<i>Air Quality: Ozone</i>	Model to census tract; new year of data
<i>Air Quality: PM2.5</i>	Model to census tract; new year of data
<i>Diesel Particulate Matter</i>	Allocate to census tract
<i>Pesticide Use</i>	Allocate to census tract; added 3 pesticides, new year of data
<i>Traffic Density</i>	Allocate to census tract
<i>Toxic Releases from Facilities</i>	Use modeled risk screening environmental indicators from U.S. EPA
<i>Drinking Water Quality</i>	New indicator: Toxicity-weighted water quality

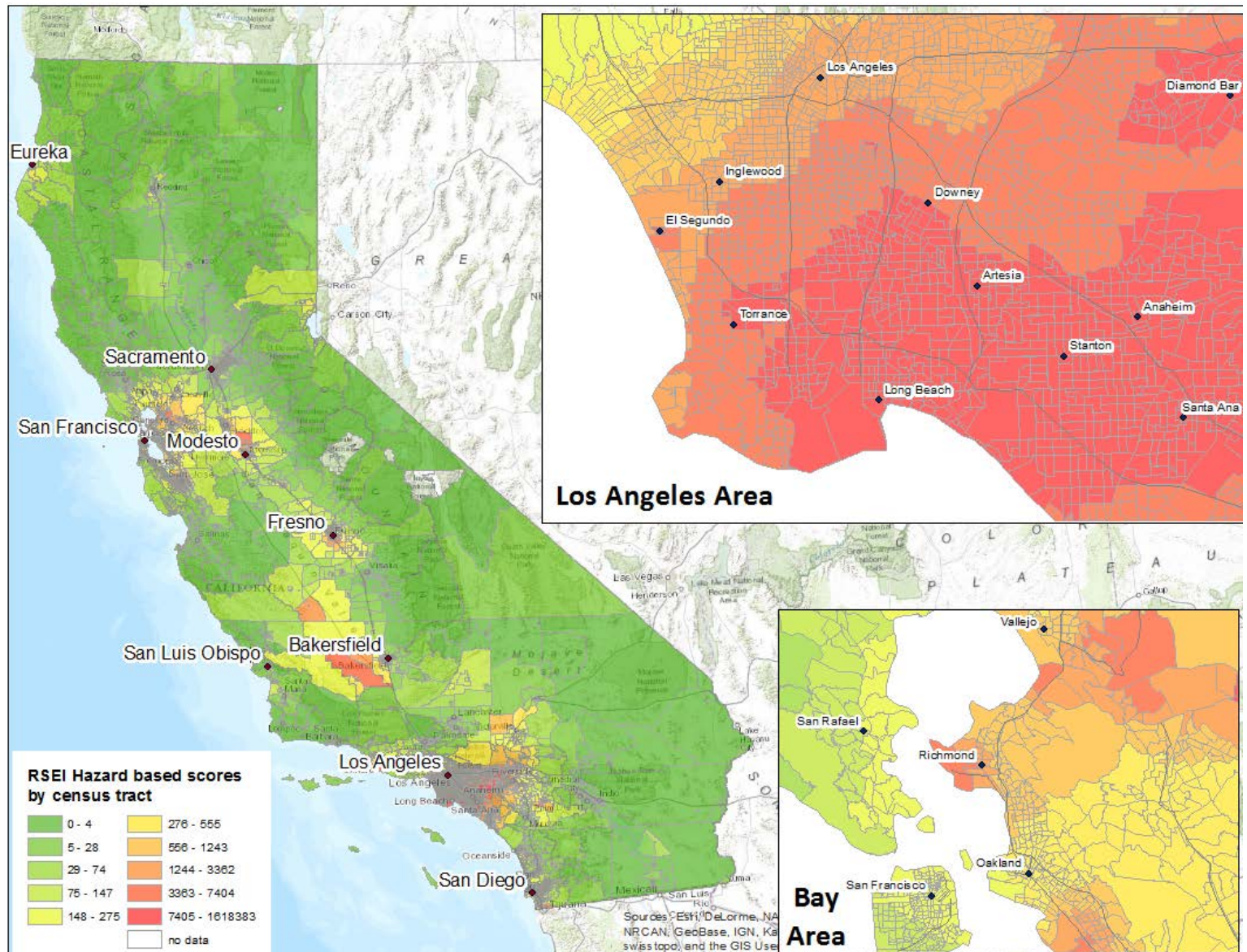


TOXIC RELEASES INDICATOR: RSEI

- Transition to U.S. EPA's Risk Screening Environmental Indicators (RSEI)
 - Computer-based screening tool
 - Uses Toxic Release Inventory (TRI) release data
 - Uses emission locations and weather to model how chemicals spread in air (in 810m-square grid units)
 - Combines air concentrations with toxicity factors
- Improvements offered by using RSEI data
 - Comprehensive modeling of chemical dispersion
 - Improvements in accuracy of facility locations and stack heights



TOXIC RELEASE DISTRIBUTION (RSEI BY CENSUS TRACT)



DRINKING WATER QUALITY INDICATOR

Tiers of Geographic Boundaries

More Information Available

Public Water Systems:
A) Known service boundaries
B) Approximated service boundaries

“Delivered” Community Water Systems Sources

- Treated
- If treated not available:
 - Combined wells
 - Untreated wells
 - Raw wells, if others not available

Groundwater Basins:
C) Approximated systems groundwater quality

All Public Water System Sources

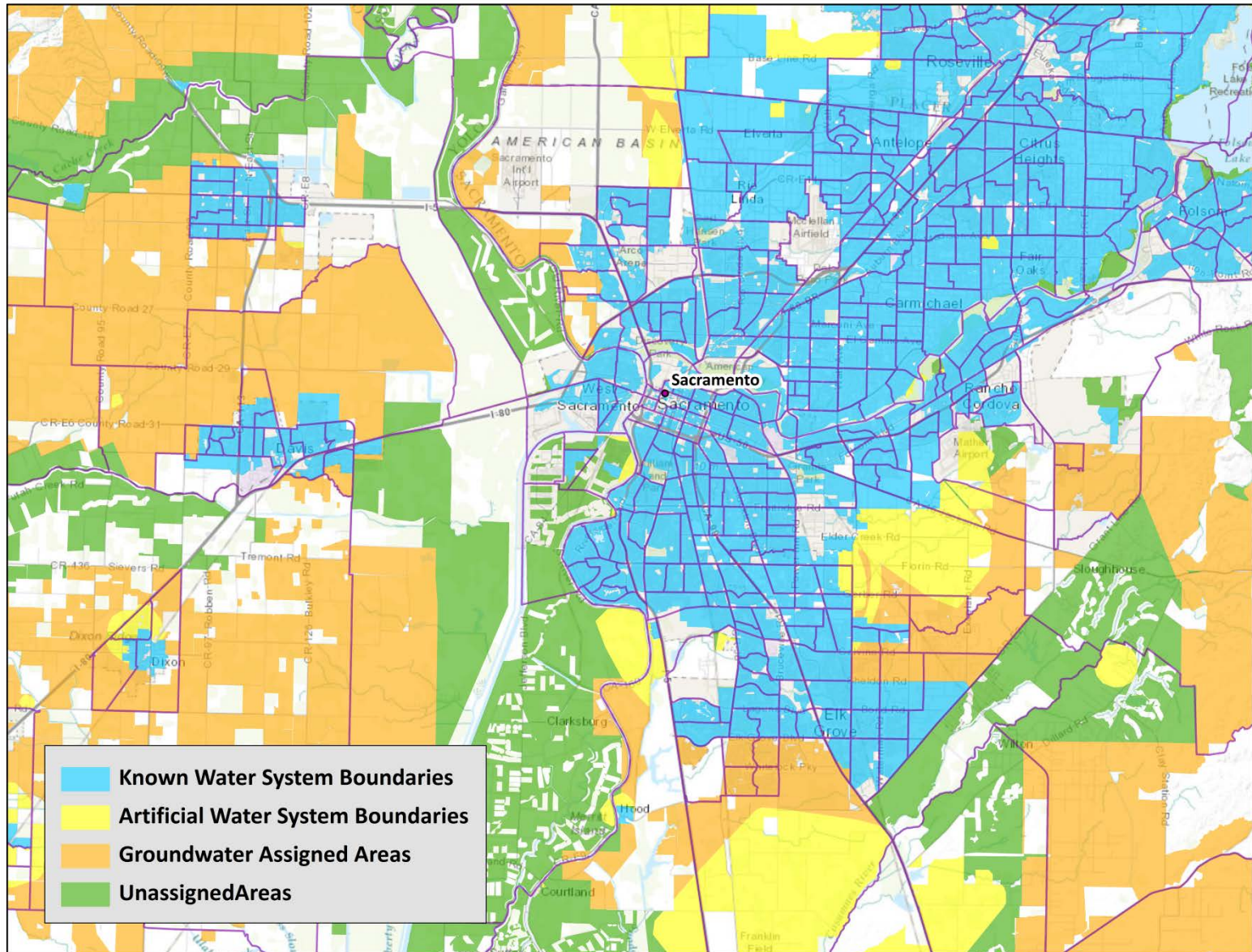
- Any available ambient groundwater data

Data from other groundwater quality projects:

- USGS Priority Basins
- GAMA Domestic Well Project

Less Information Available

DRINKING WATER SYSTEM BOUNDARIES

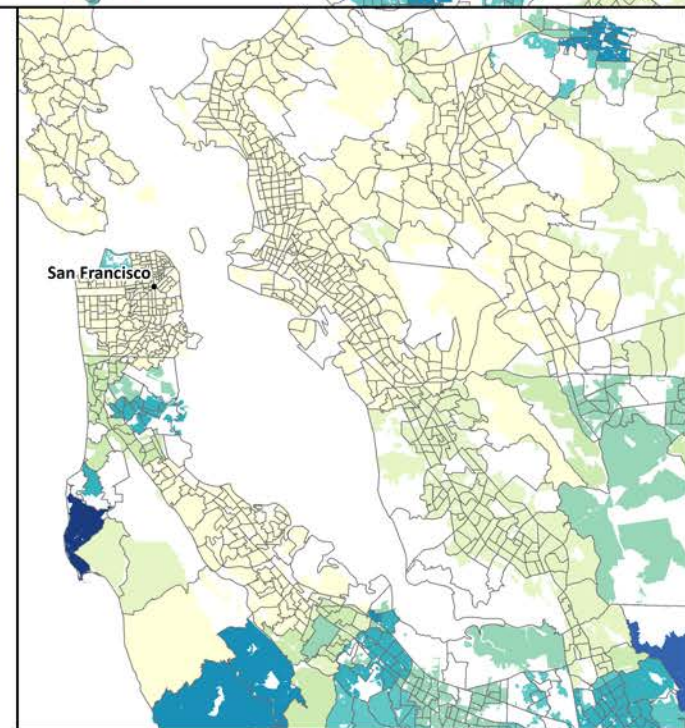
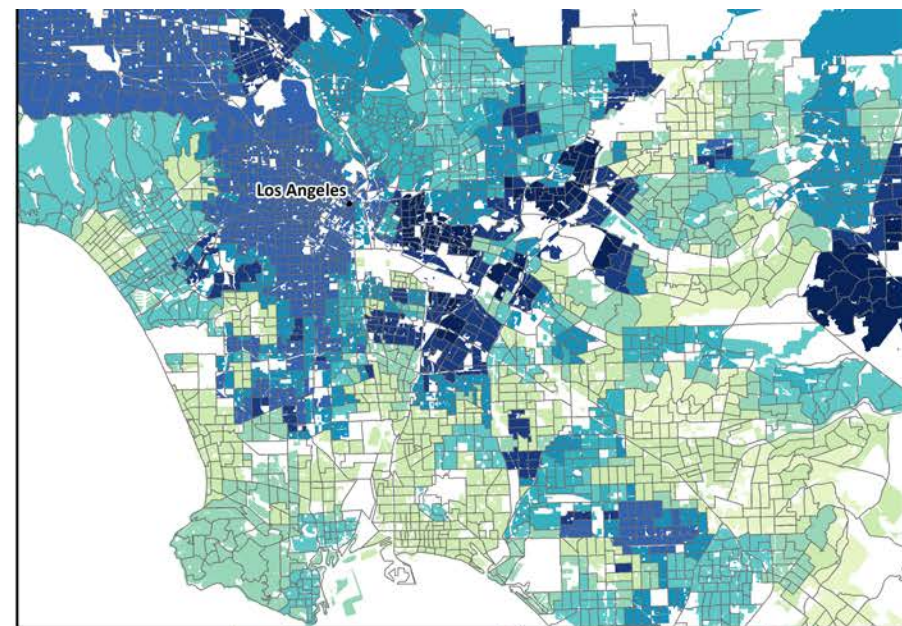
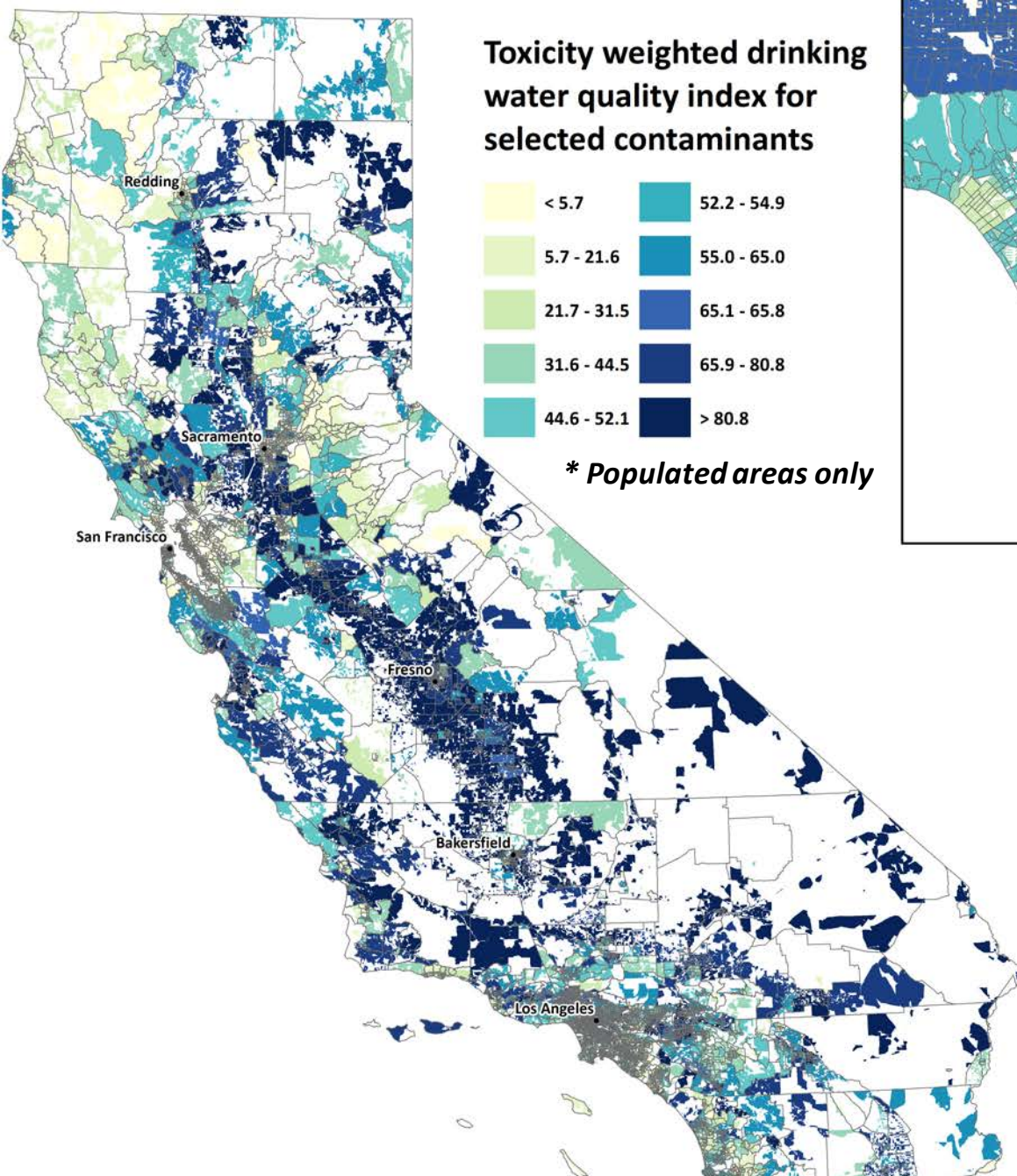


DRINKING WATER QUALITY

- Join systems with delivered water quality data (2008-2013)
- Score delivered water with a toxicity-weighted water quality index
 - Public Health Goals (PHGs) used for relative toxicity
 - Carcinogens and non-carcinogens evaluated separately

Carcinogenic Contaminants	PHG
Arsenic	0.004 µg/l
Benzene	0.15 µg/l
Cadmium	0.04 µg/l
Carbon Tetrachloride	0.1 µg/l
Dibromochloropropane (DBCP)	0.0017 µg/l
Hexavalent Chromium	0.02 µg/l
Methyl-tert-Butyl-Ether (MTBE)	13 µg/l
Radium-226	0.05 pCi/l
Tetrachloroethylene (PCE)	0.06 µg/l
Total Trihalomethanes (THM)	0.8 µg/l*
Trichloroethylene (TCE)	1.7 µg/l
Uranium	0.43 pCi/l

Non-Carcinogenic Contaminants	PHG
Barium	2 mg/l
Lead	0.2 µg/l
Mercury	1.2 µg/l
Nitrate (NO ₃)	45 mg/l
Perchlorate	6 µg/l
Toluene	150 µg/l
Total Coliform Rule Violation	--
Xylene	1800 µg/l



ENVIRONMENTAL EFFECTS INDICATORS

Indicator	Proposed Changes
<i>Cleanup Sites</i>	Apply adjustment to sites based on distance from people; allocate to census tracts; update data
<i>Hazardous Waste Facilities and Generators</i>	Hazardous waste generators: Allocate to census tracts; remove small quantity generators; new year data
	Permitted hazardous waste handling facilities: Apply adjustment to facilities based on distance from people; allocate to census tract
<i>Solid Waste Sites and Facilities</i>	Apply adjustment to facilities based on distance from people; allocate to census tracts; update data
<i>Impaired Water Bodies</i>	Apply adjustment to water bodies based on distance from people; allocate to census tracts,
<i>Groundwater Threats</i>	Apply adjustment to sites based on distance from people; allocate to census tracts; update data



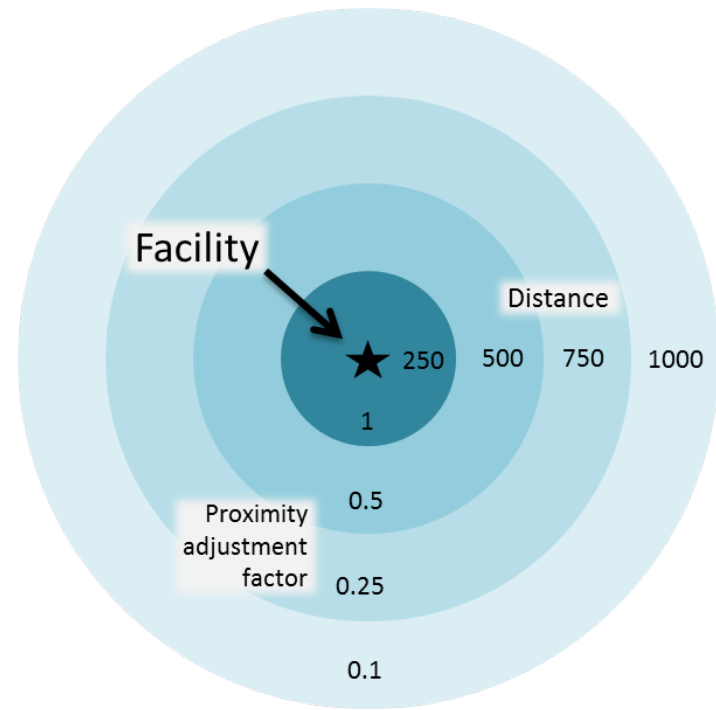
ADJUSTMENT FOR PROXIMITY TO PEOPLE

PROXIMITY ADJUSTMENT

Greater scores for hazardous sites and facilities that are closer to where people live.

Applies to *Cleanups*,
Groundwater Threats,
Solid Waste, *Hazardous Waste* indicators

MULTI-RING BUFFER



SENSITIVE POPULATIONS INDICATORS

Indicator	Proposed Changes
<i>Age: Children and Elderly</i>	Census tract values
<i>Asthma Emergency Department Visits</i>	Allocate ZIP code data to census tracts
<i>Low Birth Weight Infants</i>	Spatially modeled to census tract calculate more reliable estimates, especially for tracts with few births



SOCIOECONOMIC FACTOR INDICATORS

Indicator	Proposed Changes
<i>Educational Attainment</i>	Census tract estimates; update to (2008-2012)
<i>Linguistic Isolation</i>	Census tract estimates; update to (2008-2012)
<i>Poverty</i>	Census tract estimates; update to (2008-2012)
<i>Unemployment</i>	New indicator: Unemployment rate census tract estimates (2008-2012)

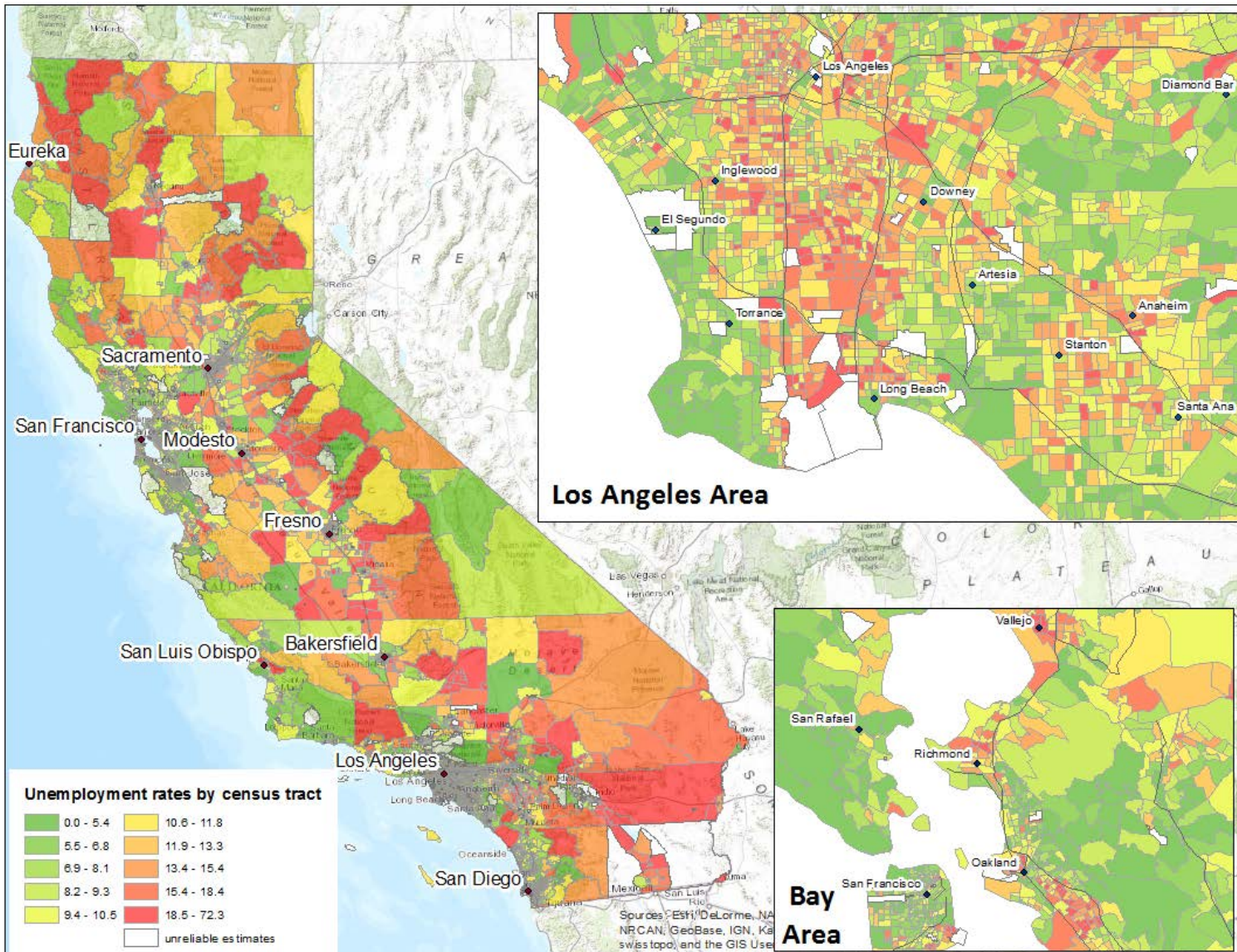


UNEMPLOYMENT

- Evidence showing increased likelihood of underlying physical and mental health problems among unemployed
 - Greater susceptibility to exposures of environmental pollution
- Some degree of correlation with poverty and education attainment, indicating a unique contribution
- Unemployment data from U.S. Census Bureau's American Community Survey
 - 5-Year estimates at the census tract level (2008-2012)
 - Population over 16 in the civilian labor force. Labor force excludes students, homemakers, volunteer workers, institutionalized, military on active duty, retired, and people not looking for work.

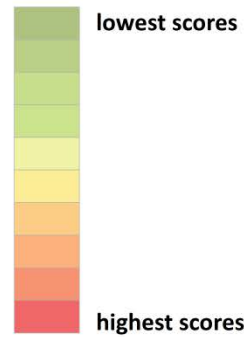


UNEMPLOYMENT RATE RESULTS

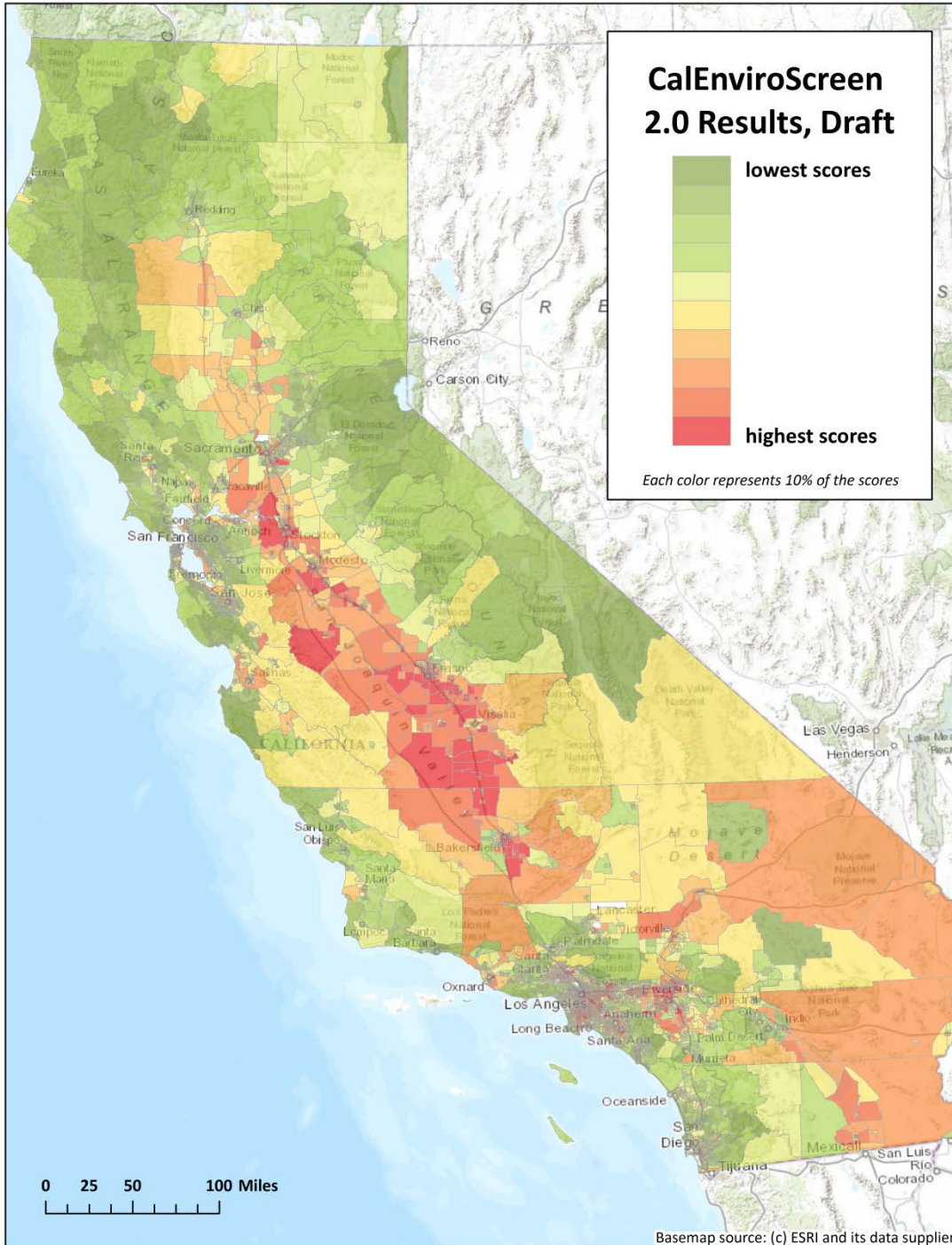


CALENVIROSCREEN 2.0 RESULTS

CalEnviroScreen 2.0 Results, Draft

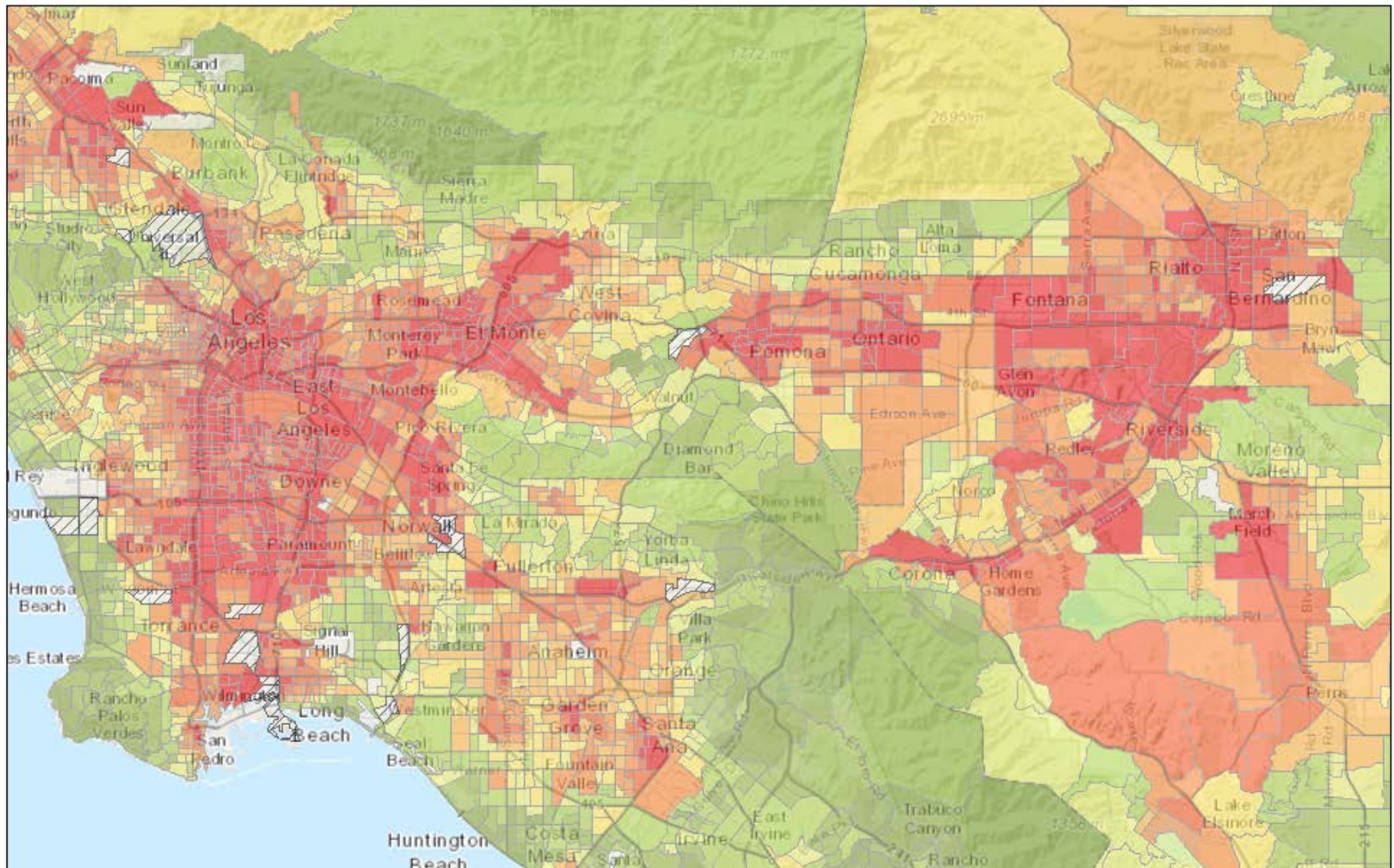


Each color represents 10% of the scores



CALENVIROSCREEN
VERSION 2.0,
DRAFT RESULTS

CalEnviroScreen 2.0 (draft) All Results Map



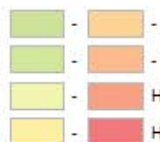
May 13, 2014

CES2.0 draft results

CI10grps


Lowest Scores (Bottom 10%)

-

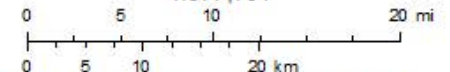


Highest Scores (11 - 20%)

Highest Scores (Top 10%)

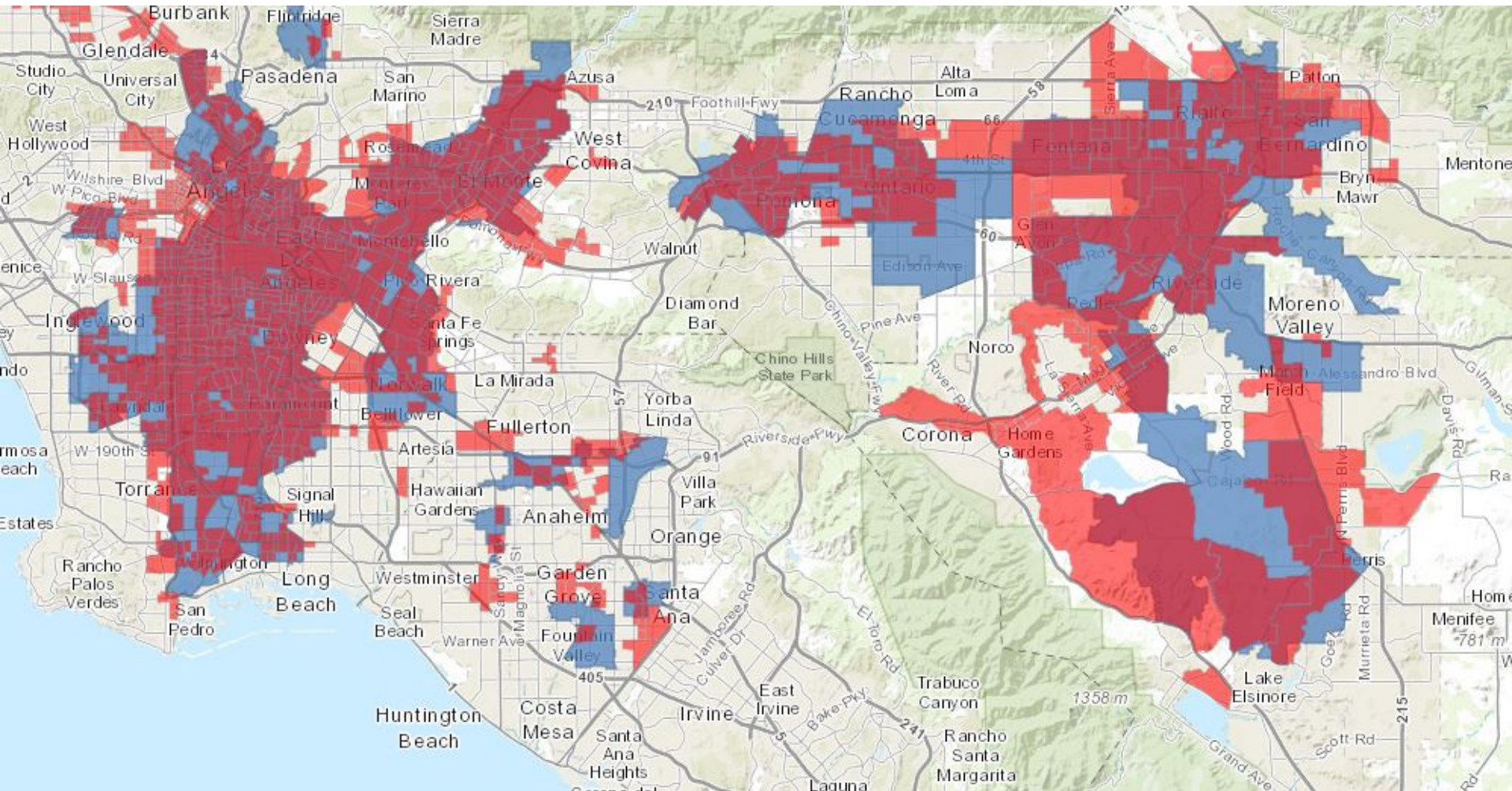
 CES2_0results_highpollution

1:577,791



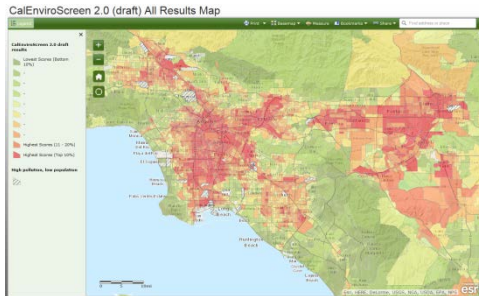
Sources: Esri, HERE, DeLorme, TomTom, Intermap, increment P Corp., GEBCO, USGS, FAO, NPS, NRCAN, GeoBase, IGN, Kadaster NL

OVERLAP OF CES 1.1 WITH CES 2.0



DRAFT CalEnviroScreen 2.0 RESULTS

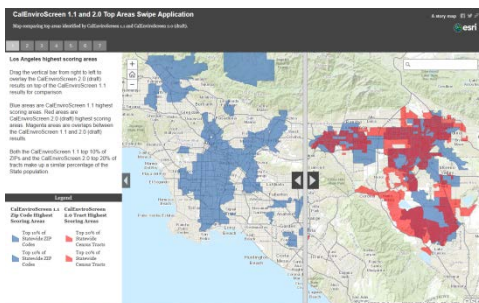
[AVAILABLE AT WWW.OEHHA.CA.GOV/EJ/CES2](http://WWW.OEHHA.CA.GOV/EJ/CES2)



All CalEnviroScreen 2.0 Scores by Census Tract



Highest Scoring 10% and 20% CalEnviroScreen 2.0 Census Tracts



Overlay of CalEnviroScreen 2.0 (Top 20%) with CalEnviroScreen 1.1 (Top 10%)

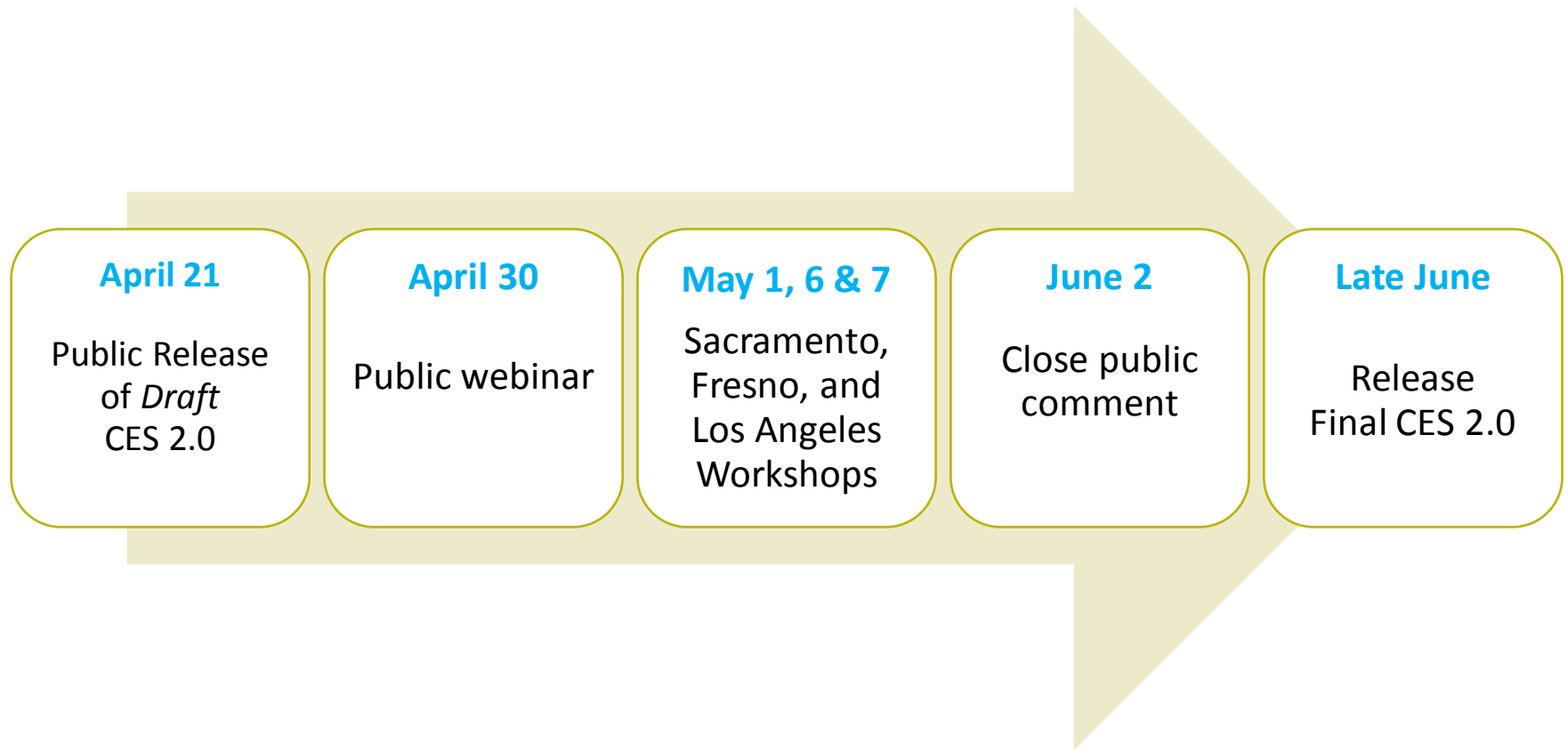


USES OF CALENVIROSCREEN

- To aid ongoing planning and decision-making within CalEPA
 - Environmental Justice Small Grant program
 - Promote greater compliance with environmental laws
 - Prioritize site-cleanup activities
- Strategic Growth Council
 - First use of CalEnviroScreen outside of CalEPA
- SB 535 (De Leon, 2012)
 - CalEPA shall identify “disadvantaged communities” for investment opportunities based on geographic, socioeconomic, public health and environmental hazard criteria.



TIMELINE



QUESTIONS & DISCUSSION