

SAN JOAQUIN VALLEY GREENPRINT

Clark Thompson, Senior Planner
Fresno Council of Governments

clarkt@fresnocog.org

(559) 233-4148 x203

Greenprint website:

<http://sjvgreenprint.ice.ucdavis.edu>

GREENPRINT PHASE I

- ❖ Initiated by Regional Policy Council
- ❖ Counterpart to Blueprint
- ❖ Valleywide Perspective
- ❖ Challenges – Water, Loss of Farmland and Habitat, Climate
- ❖ Population Growth – 4.1 (2013) to 7.5 (2050)
- ❖ Tool for Decision-Makers
- ❖ \$270,000 from Strategic Growth Council

WHAT IS PHASE I

- ❖ Compile and evaluate a large collection of publicly funded maps and data
- ❖ Portray the Valley's water, agricultural, ecological and energy resources
- ❖ A single repository of information and available thru a single point of access
- ❖ An interactive mapping portal
- ❖ Report that uses the collected maps to tell the story of the San Joaquin Valley

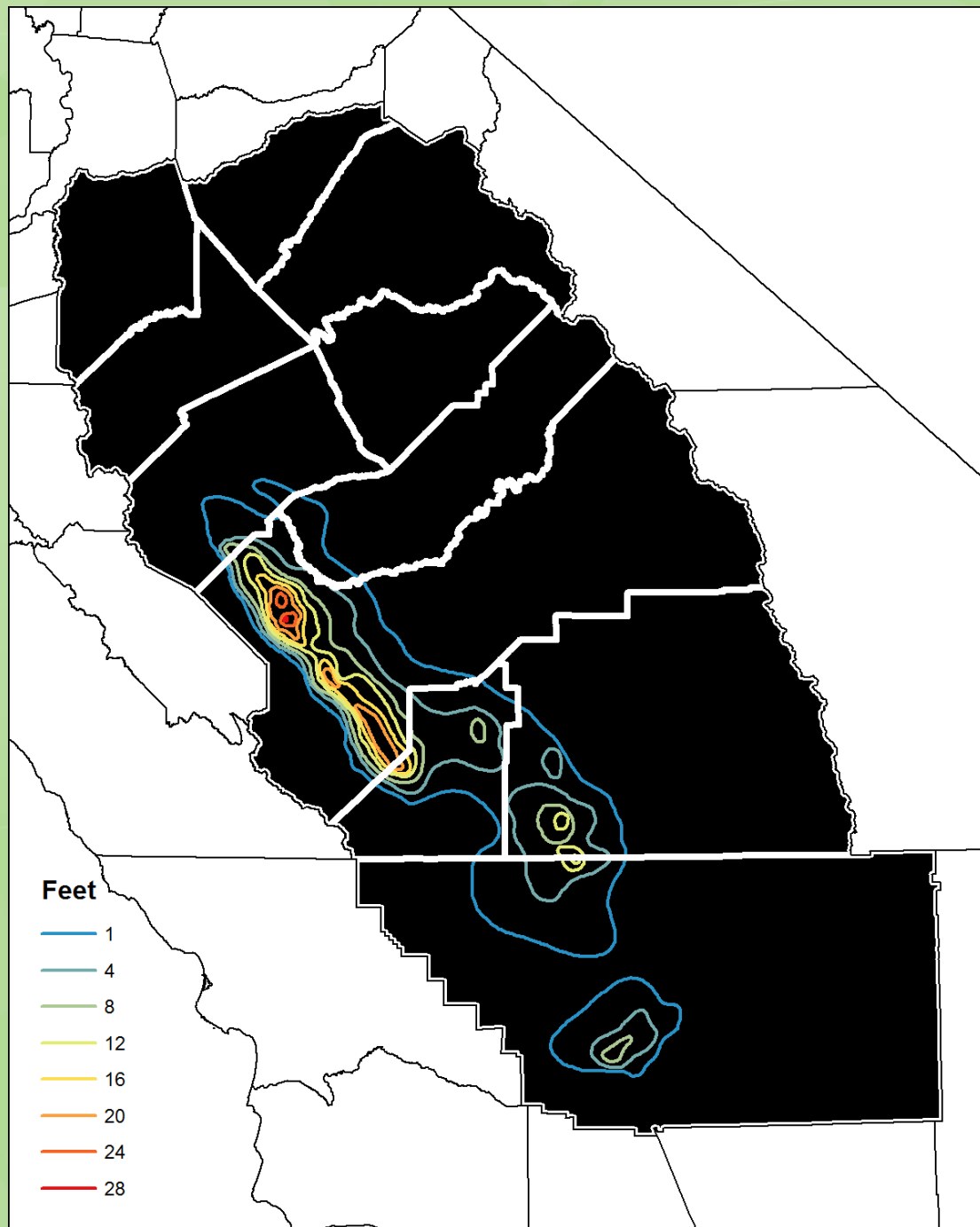
WHAT ISN'T PHASE I

- ❖ Does not propose policy
- ❖ Does not usurp local land use authority
- ❖ Does not advance a particular agenda
- ❖ Respects private property rights – no new regulations or public/private management requirements
- ❖ A resource that informs land use and resource management decisions and plan and project development

Subsidence in Feet

1926-1970

Figure 1



Potential Groundwater Recharge Areas

*Data and analysis provided
by the California Water Institute*

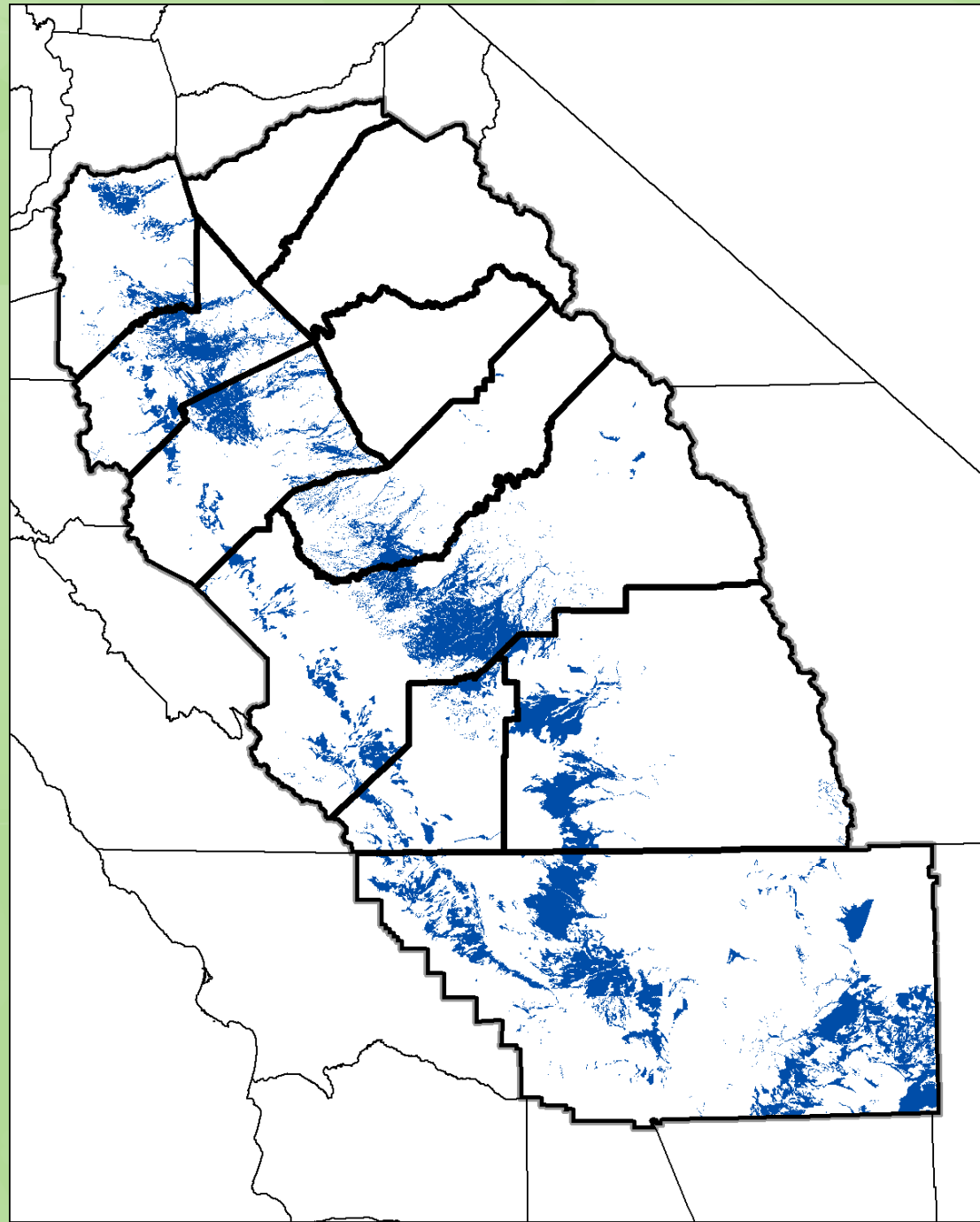
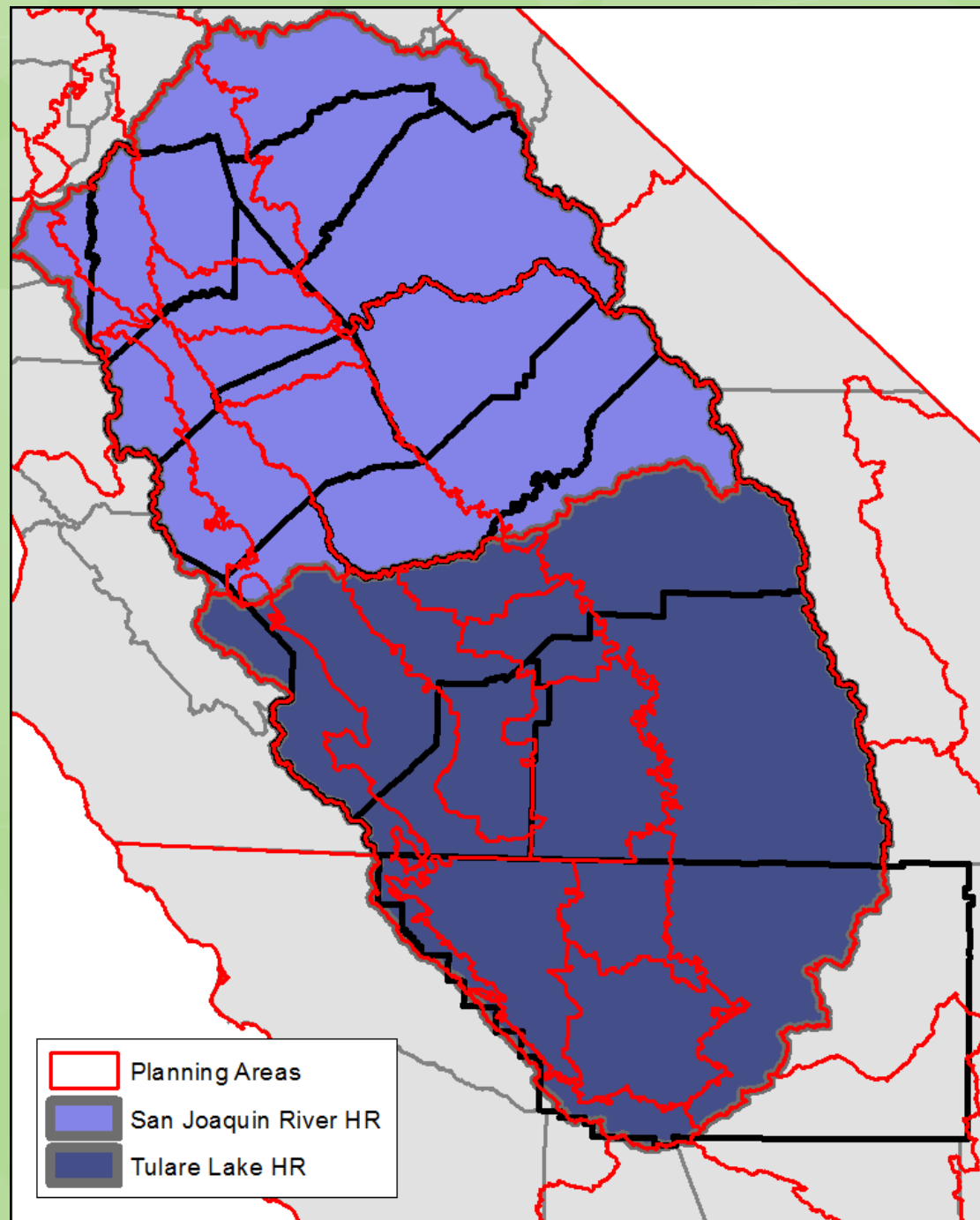


Figure 2

The San Joaquin River and Tulare Lake Hydrologic Regions as they relate to the San Joaquin Valley Counties, with Planning Areas Overlain.

Figure 3



Comparison of the Fresno Area in 1984 (left) and 2010 (right) using the FMMP datasets.

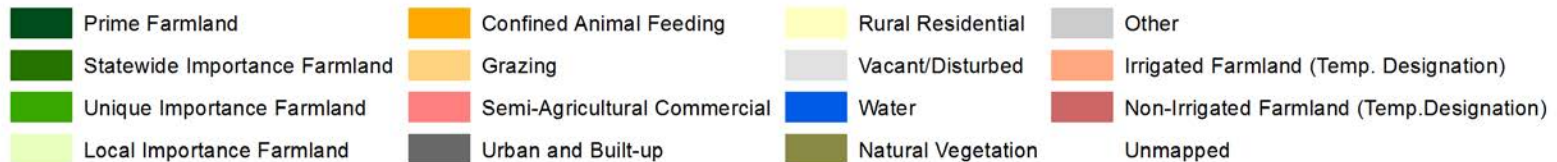
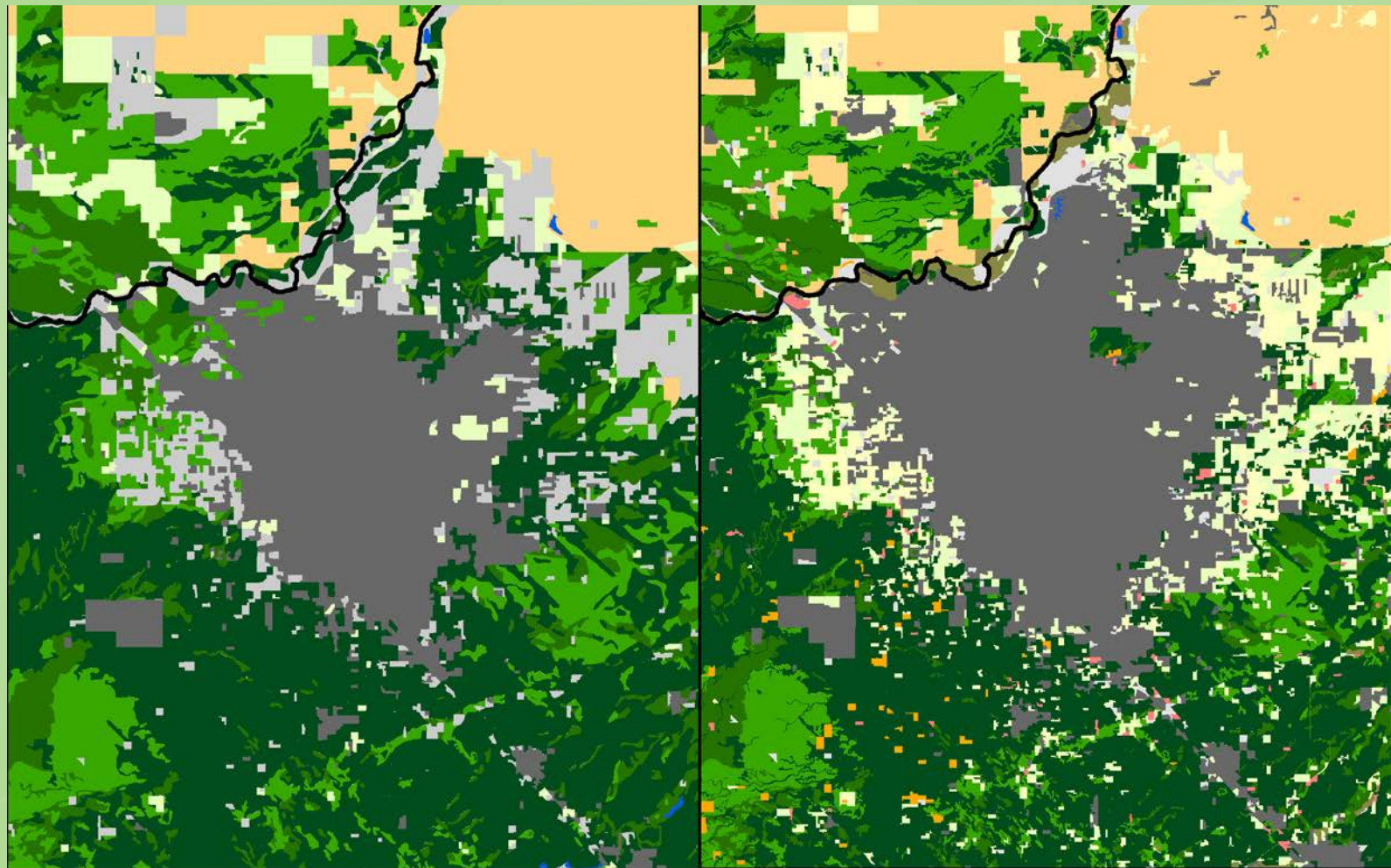
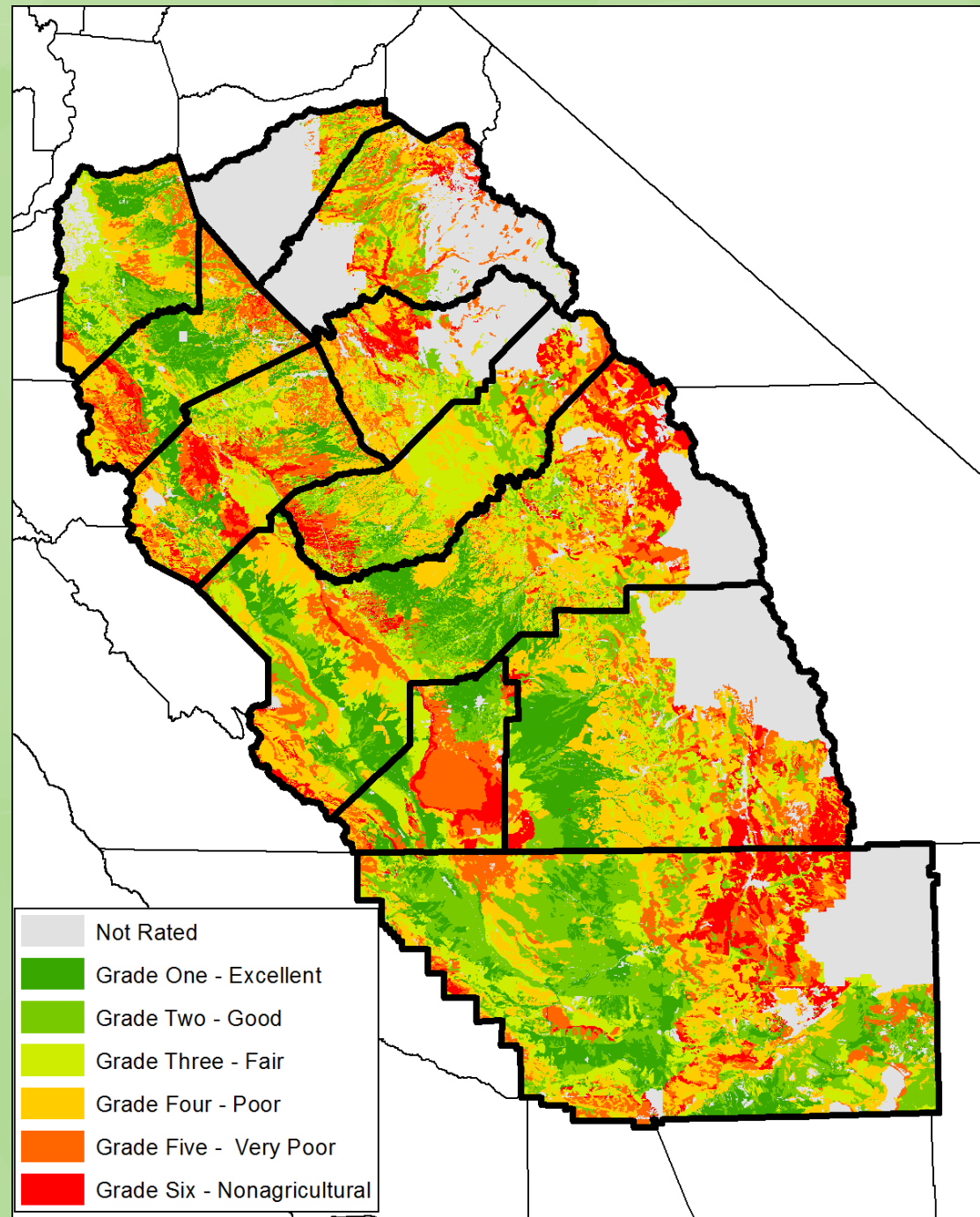


Figure
4

Storie Index, a soil
rating system for land
use and productivity

Figure 5



Soil Salinity

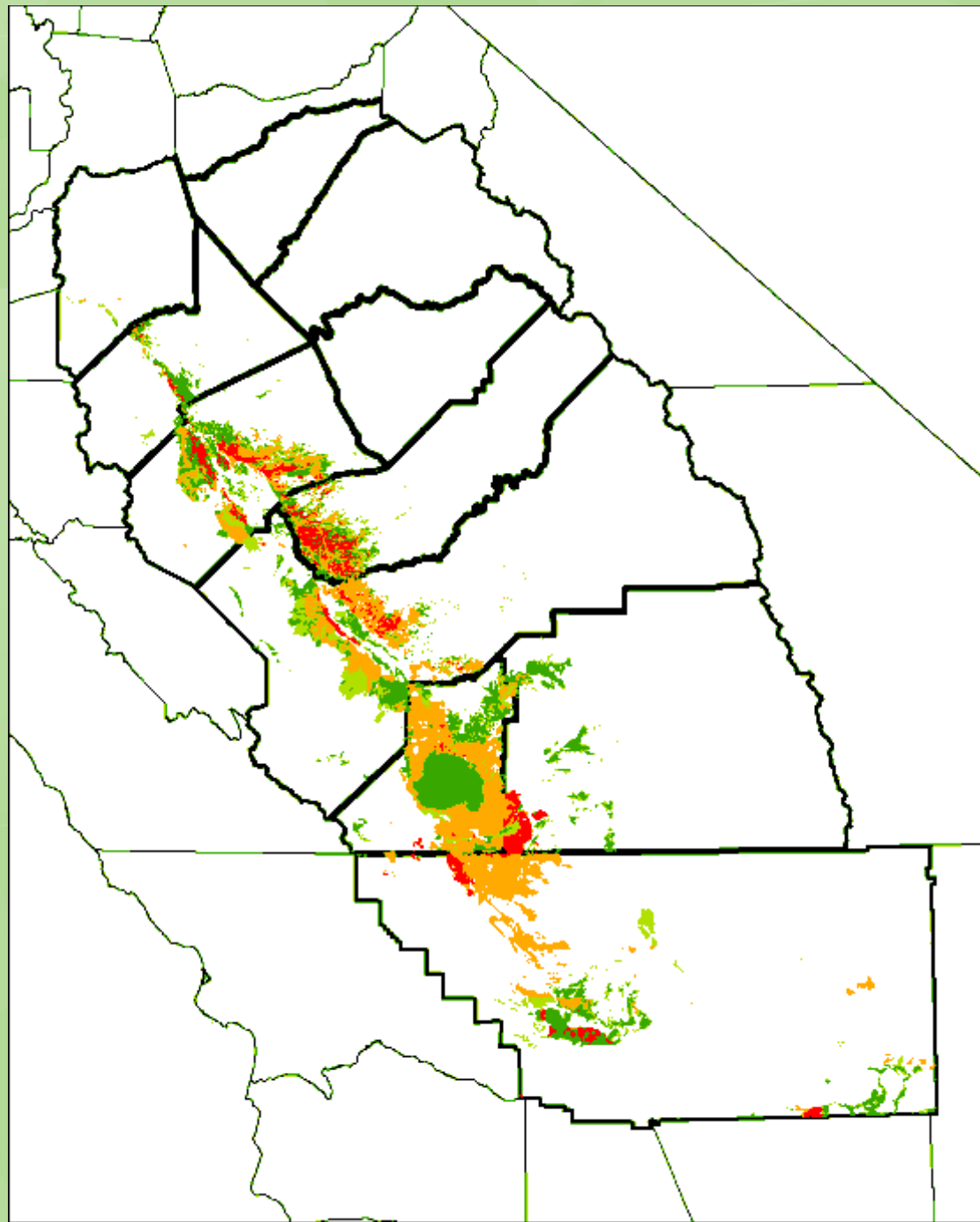
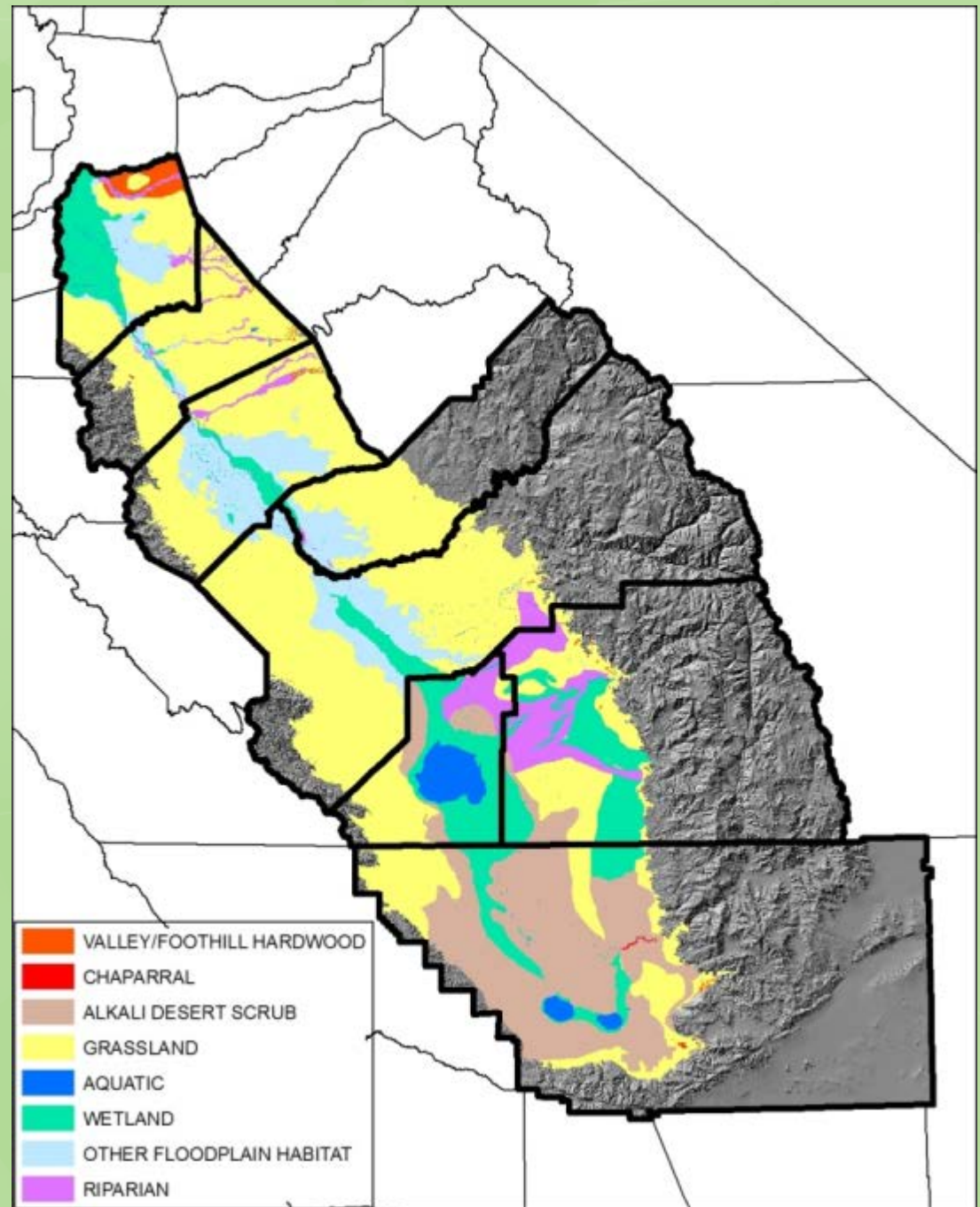


Figure 6

The extent of historic
landcover types in
the 8 county region

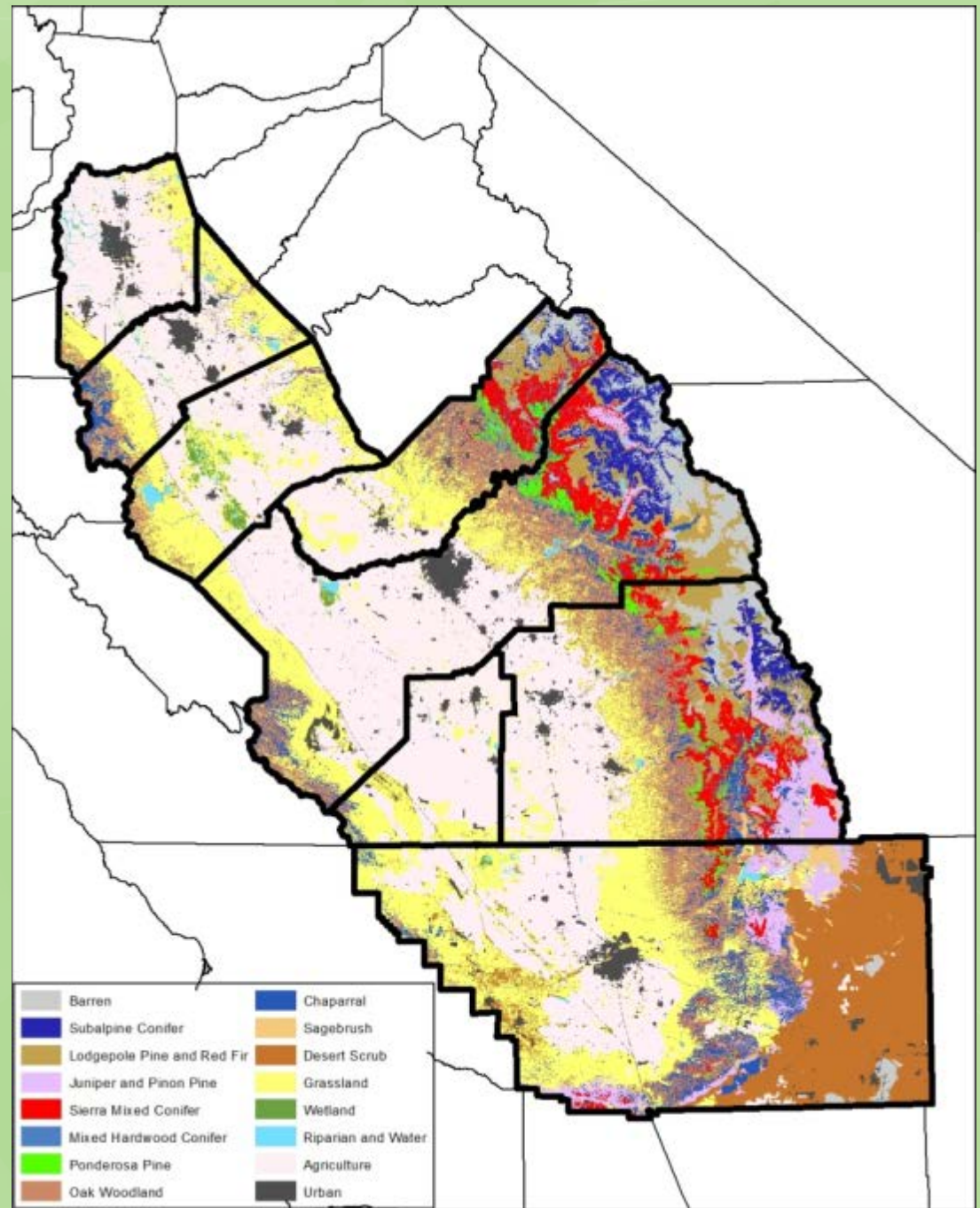
Figure 7



The FRAP map for the 8 county region.

The banding shown in the Sierra Nevada Mountains represents different forest and wood types that occupy differing elevations.

Figure 8



NEXT STEPS

- ❖ Completion of Phase I work by June 30, 2014
- ❖ Presentation of Phase I report to Valley COG Directors for acceptance
- ❖ Presentation of Phase I report to Regional Policy Council for acceptance
- ❖ Commence Phase II this summer