

Sustainable Communities in the San Joaquin Valley

San Joaquin Valley Partnership/
Regional Policy Council Meeting
June 20, 2014



Geographic Location

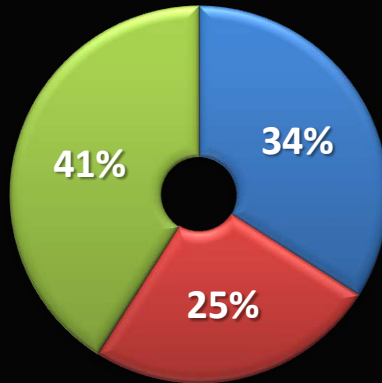
- 300 Miles from San Joaquin County in the North to Kern County in the South.
- Surrounded By 3 of the 4 Largest MPO Regions in the State
 - SACOG to the North
 - MTC to the West
 - SCAG to the South





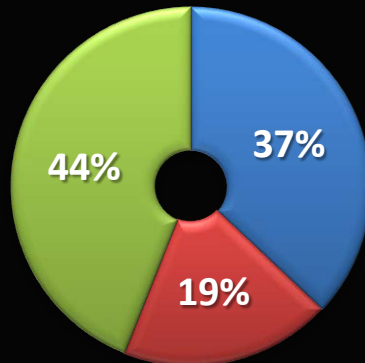
**ALL San Joaquin Valley Counties Rank In California's Top 12
for Agricultural Production.**

2010 Population



■ 4 Largest Cities ■ Rural ■ Small Cities

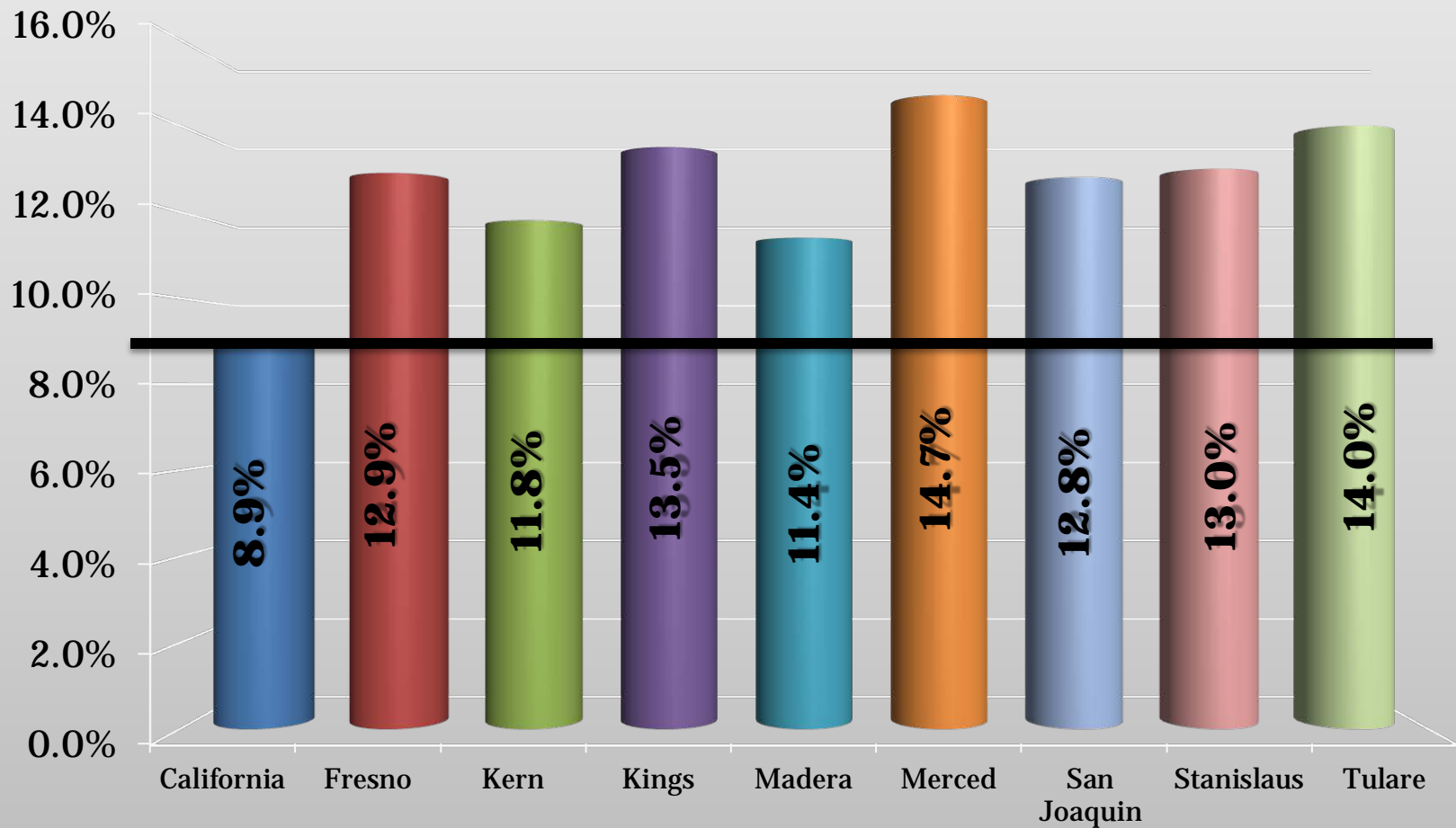
2035 Population



■ 4 Largest Cities ■ Rural ■ Small Cities



San Joaquin Valley Unemployment Rate

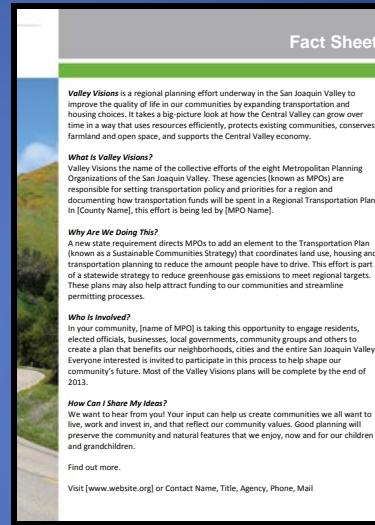


Interregional Travel



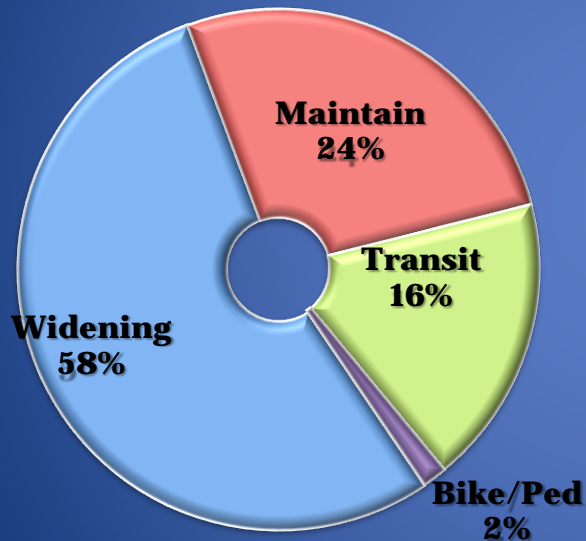
An Increasing Bay Area Employment Need, Coupled with Affordable San Joaquin Valley Housing and High Unemployment = More Commuters by 2035

Community Voices on Transportation Choices

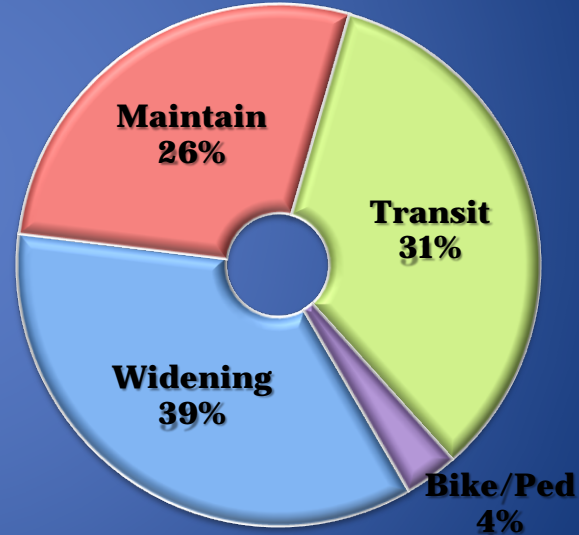


Strategies To Meet Valley Needs

**2011 RTP
Investments**



**2014 RTP/SCS
Investments**



FresnoCOG SCS - Preferred Scenario

Land-Use Pattern for New Growth

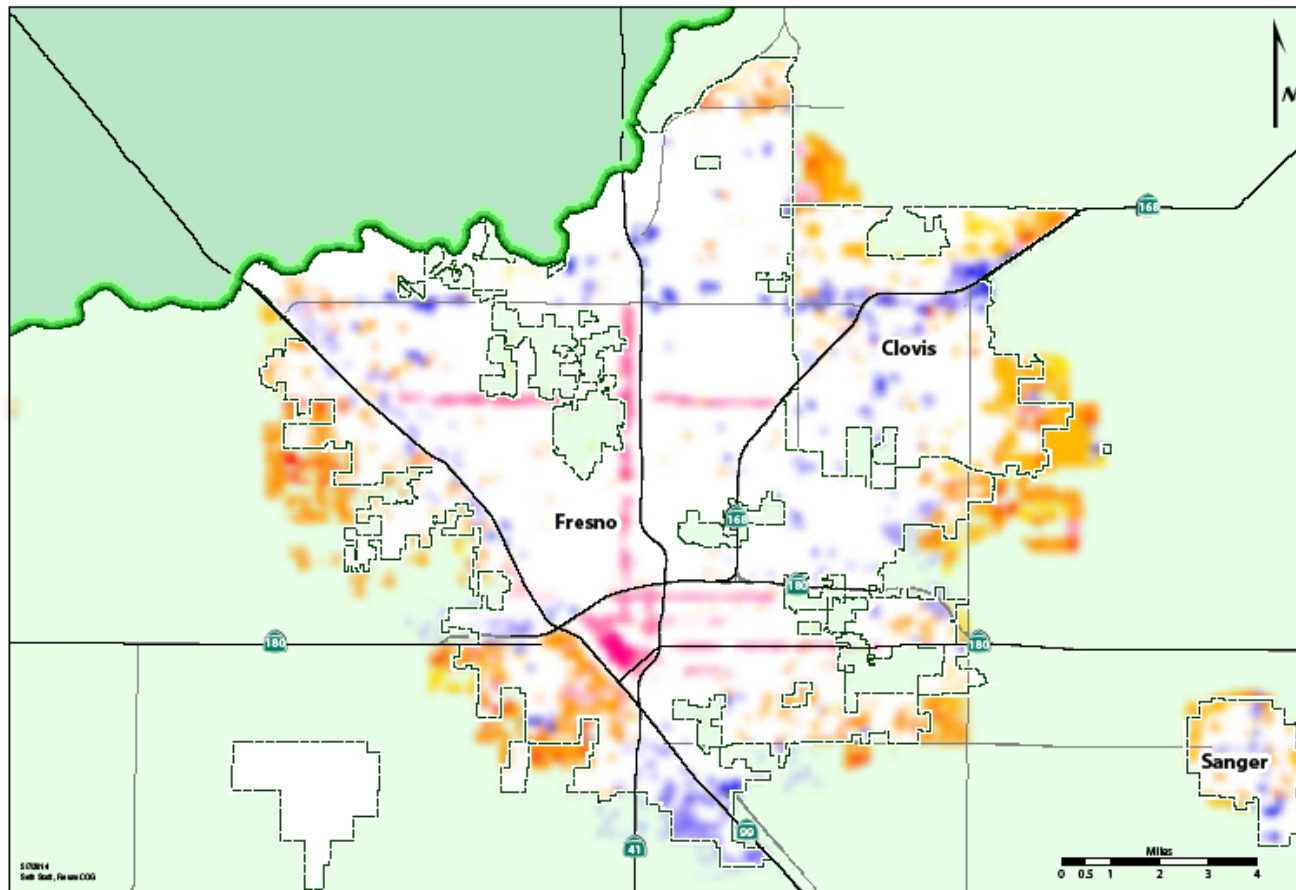
Residential



Commercial



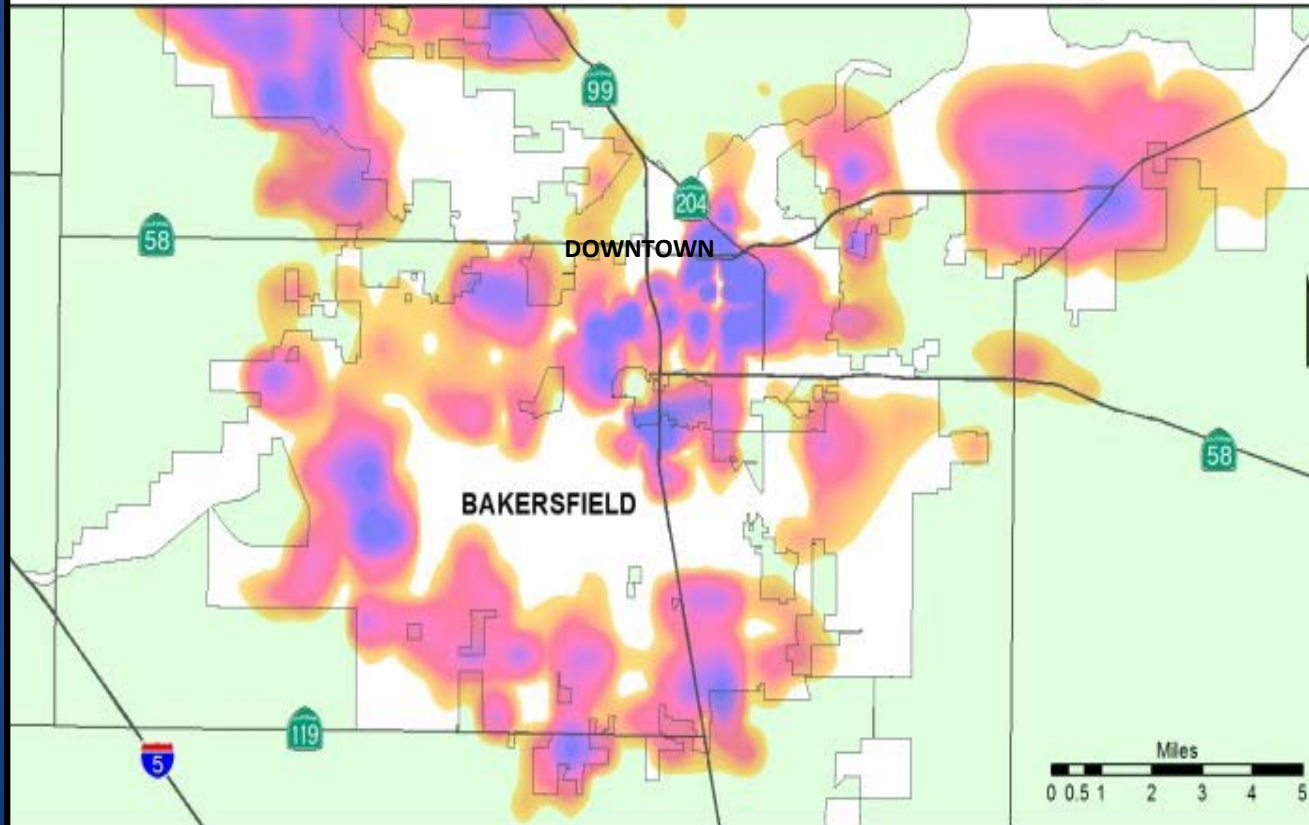
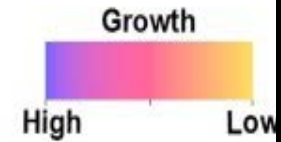
Mixed Use



5/7/2014
Staff Staff, Fresno COG

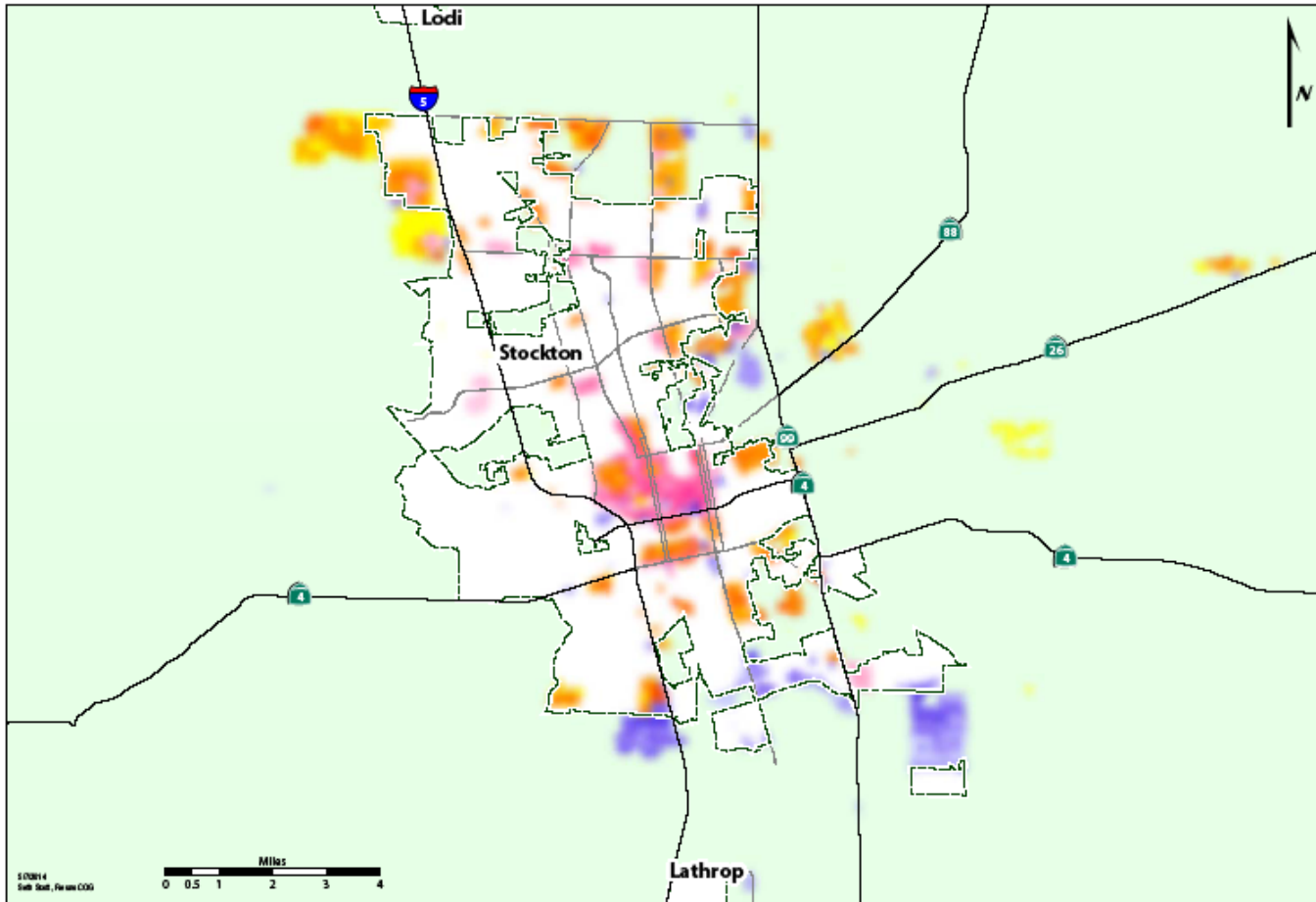
KernCOG SCS - Preferred Scenario

Land-Use Pattern for New Growth (Metro Area)



SJCOG SCS - Preferred Scenario

Land-Use Pattern for New Growth (Metro Area)



5/7/2014
Staff Staff, Planning COG

StanCOG SCS - Preferred Scenario

Land-Use Pattern for New Growth (Metro Area)

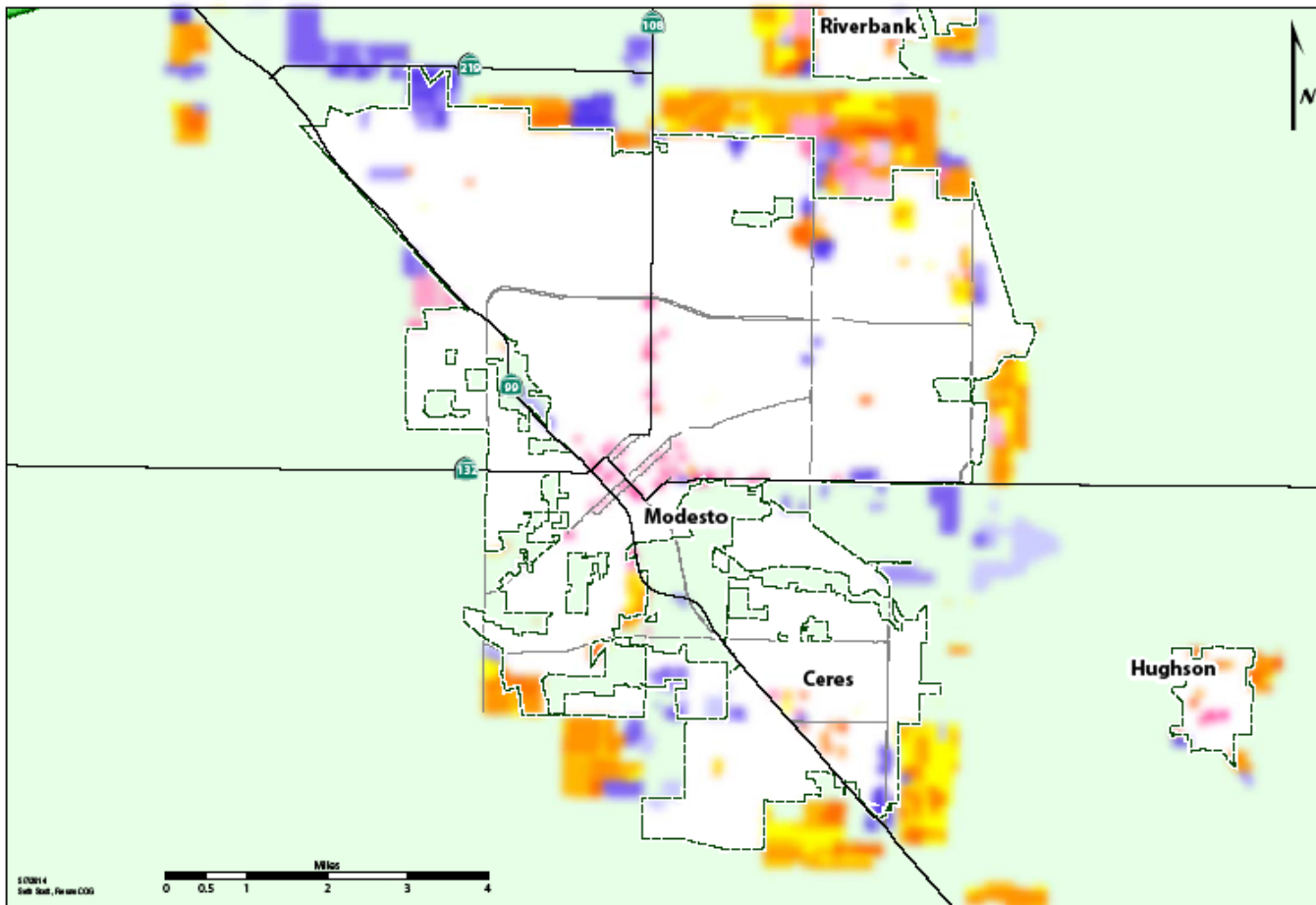
Residential



Commercial



Mixed Use



Next Steps

- June/July 2014 Anticipated MPO Board Adoptions
- June 2014/October 2014 ARB Board Items – MPO RTP/SCSs
- RTP/SCS Implementation
- Potential ARB Target Update



Policy Council Recommended Action

Approve the Valley-wide Policy Position Outlined Below:

- 1. Valley MPOs are committed to the adoption of their SCSs on schedule.**
- 2. The San Joaquin Valley MPOs have worked hard to develop their individual SCSs in accordance with the SB 375 process. This is true of the individual SCS policies, as well as, the technical quantification of greenhouse gas reductions.**
- 3. Challenges with the ARB board approved technical methodology and metric must be rectified as part of ARB's SB 375 target update.**
- 4. Regional targets set by the ARB board must be fully vetted and not implemented until the third round of SCS development.**

