



**COMMUNITY  
WATER CENTER**  
EL CENTRO COMUNITARIO  
POR EL AGUA

**San Joaquin Valley Disadvantaged Communities  
Impacted by Lack of Access to Drinking Water**

California Partnership for the San Joaquin Valley,  
June 19, 2015



**COMMUNITY  
WATER CENTER**  
EL CENTRO COMUNITARIO  
POR EL AGUA

**Our Mission:**

Act as a catalyst for community-driven water solutions through organizing, education and advocacy in California's San Joaquin Valley.

# MAIN FACTORS AFFECTING ACCESS TO DRINKING WATER

- Source water
- Institutional capacity
- Infrastructure
- Community equity



# MAIN FACTORS AFFECTING ACCESS TO DRINKING WATER

- Source water
- Institutional capacity
- Infrastructure
- Community equity



# MAIN FACTORS AFFECTING ACCESS TO DRINKING WATER

- Source water
- Institutional capacity
- Infrastructure
- Community equity



# MAIN FACTORS AFFECTING ACCESS TO DRINKING WATER

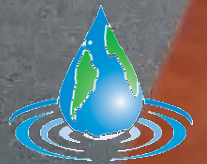
- Source water
- Institutional capacity
- Infrastructure
- Community equity





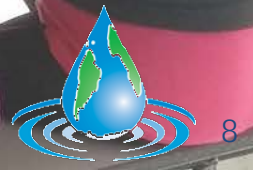
## Cutler and Orosi

- Groundwater conditions poor and deteriorating
- Residents have expressed frustration with their water boards



# Sultana and East Orosi

- Source water contaminated by nitrates and DBCP
- Water providers lacking TMF capacity
- Safe drinking water at risk or unavailable with current infrastructure







## Seville and Yettem

- Groundwater is contaminated with nitrates
- Water systems under County receivership
- Unaffordable monthly water bills
- Dilapidated infrastructure



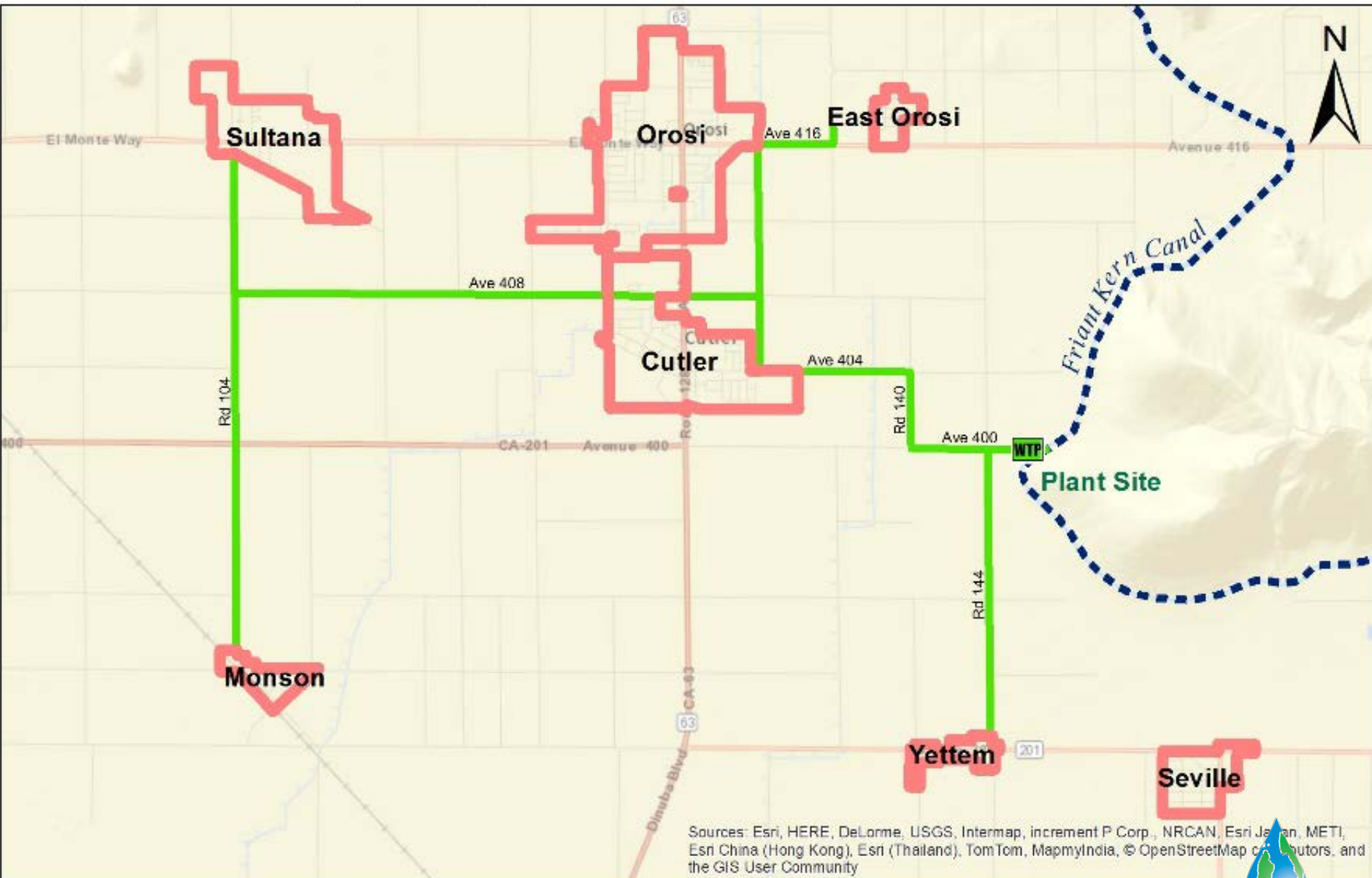


## Monson

- 41 homes on domestic wells
- High nitrate levels; more than ¼ of community impacted by well failure
- No governance entity



# Northern Tulare County Regional Project



# SOLUTIONS WE'RE WORKING TOWARD

- Leverage drought resources for long-term solutions
- Regional and shared solutions
- Flexible funding for technical assistance, outreach, and education
- Optimize resources for community-driven solutions



# SOLUTIONS WE'RE WORKING TOWARD

- Leverage drought resources for long-term solutions
- Regional and shared solutions
- Flexible funding for technical assistance, outreach, and education
- Optimize resources for community-driven solutions



# SOLUTIONS WE'RE WORKING TOWARD

- Leverage drought resources for long-term solutions
- Regional and shared solutions
- Flexible funding for technical assistance, outreach, and education
- Optimize resources for community-driven solutions



# SOLUTIONS WE'RE WORKING TOWARD

- Leverage drought resources for long-term solutions
- Regional and shared solutions
- Flexible funding for technical assistance, outreach, and education
- Optimize resources for community-driven solutions



Thank You!

[www.communitywatercenter.org](http://www.communitywatercenter.org)

