

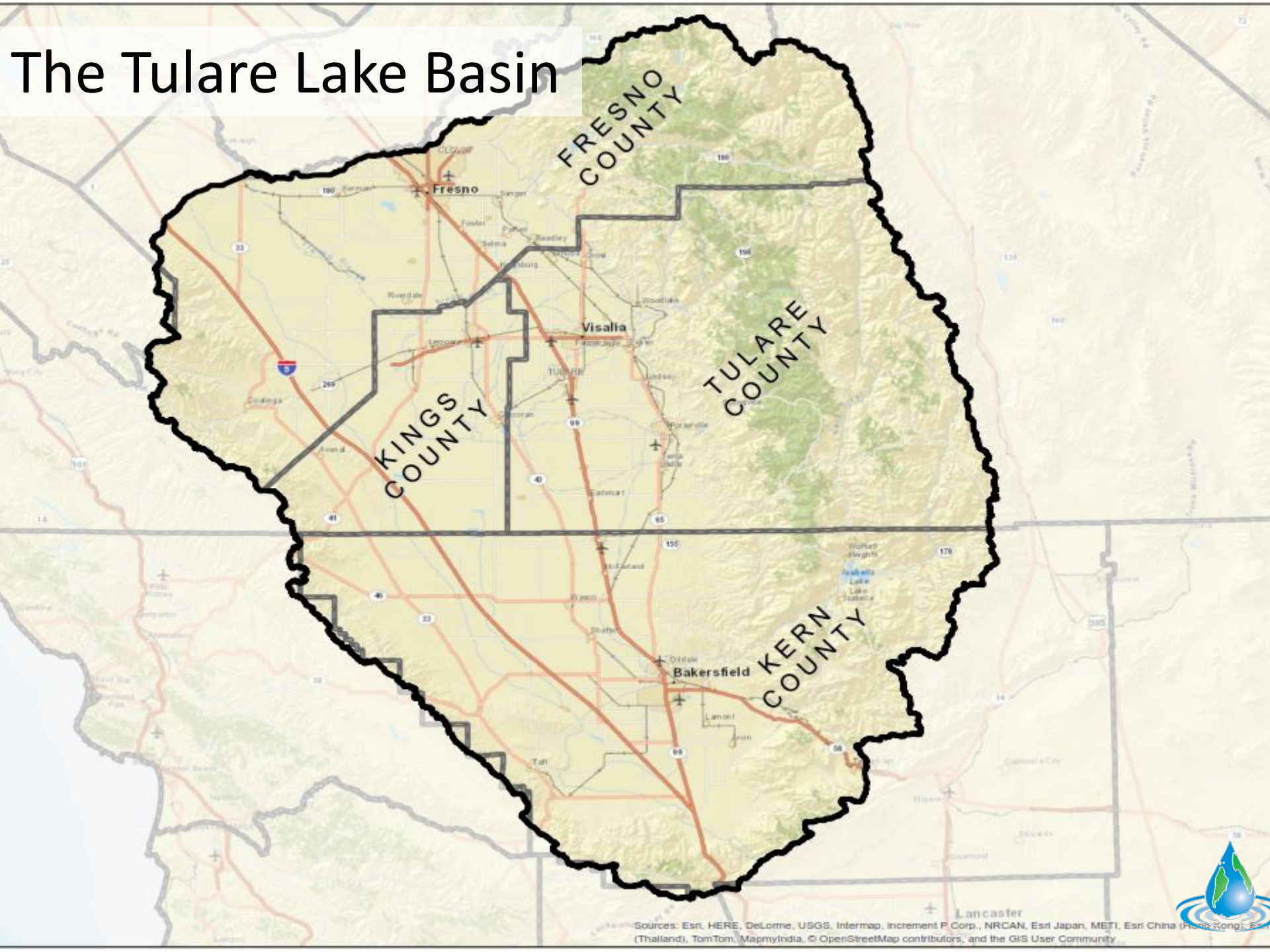


The Tulare Lake Basin Disadvantaged Community Water Study

Kristin Dobbin
Regional Water Management Coordinator
Community Water Center



The Tulare Lake Basin



The Tulare Lake Basin

- 4 Counties
- 7 IRWM groups
- 7 groundwater sub-basins
- 339,814 residents
- 530 communities
- 353 Disadvantaged Communities (DACs)



The Tulare Lake Disadvantaged Community Water Study

Purpose: Develop a plan for regional water and wastewater solutions for disadvantaged communities in Fresno, Kern, Kings, and Tulare Counties.

Tasks:

- Data gathering, mapping, and database creation
- Stakeholder consultation and community outreach
- Selection of pilot projects and studies to develop representative solutions to priority issues
- Implementation of pilot project stakeholder process
- Preparation of Final Report



The Stakeholder Oversight Advisory Committee (SOAC) brought a diverse set of stakeholders together to guide the process.



Recommendations

The 59 specific recommendations fall into seven categories:

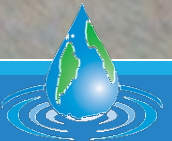
- Improve local technical, managerial, and financial (TMF) capacity
- Improve operation and maintenance funding
- Improve water supply quality and reliability
- Improve funding for disadvantaged communities
- Improve disadvantaged community awareness and participation
- Improve land use planning to minimize creation of new water/wastewater issues
- Develop and maintain information on DAC water/wastewater needs





Successes:

- Comprehensive, regional understanding of issues
- Locally-driven, bottom-up
- Brought diverse stakeholders together consistently over two years
- Recommendations cover many levels and aspects of water resources management
- Road-map for progress
- Lasting relationships and partnerships



Moving forward with Regional Planning

- Helps identify possible solutions to secure better services
- Creates larger economies of scale
- Builds a stronger voice to bring funding to the region
- Allows for learning across different resource management groups, processes and areas
- Improved regional coordination and communication

